

V

VICTORIAN

HAND-PRINTS



BRADBURY & BRADBURY ART WALLPAPERS





The Victorian Era, which stretched from 1837 to 1901, was a period of unprecedented transformation. Europe and America in the 1830s were traditional agrarian societies; travel was by horse or by sail, lighting by oil lamp and candle. By 1901, the span of a single lifetime, there existed electric light, automobiles, skyscrapers and telephones.

In the decorative arts, this vibrant era did not produce merely one style—it produced a myriad. Historical revivals, an anti-industrial return to nature, ardent futurism, and Oriental exoticism all coexisted in the public imagination, and were often found in enthusiastic, if not startling, decorative combinations.

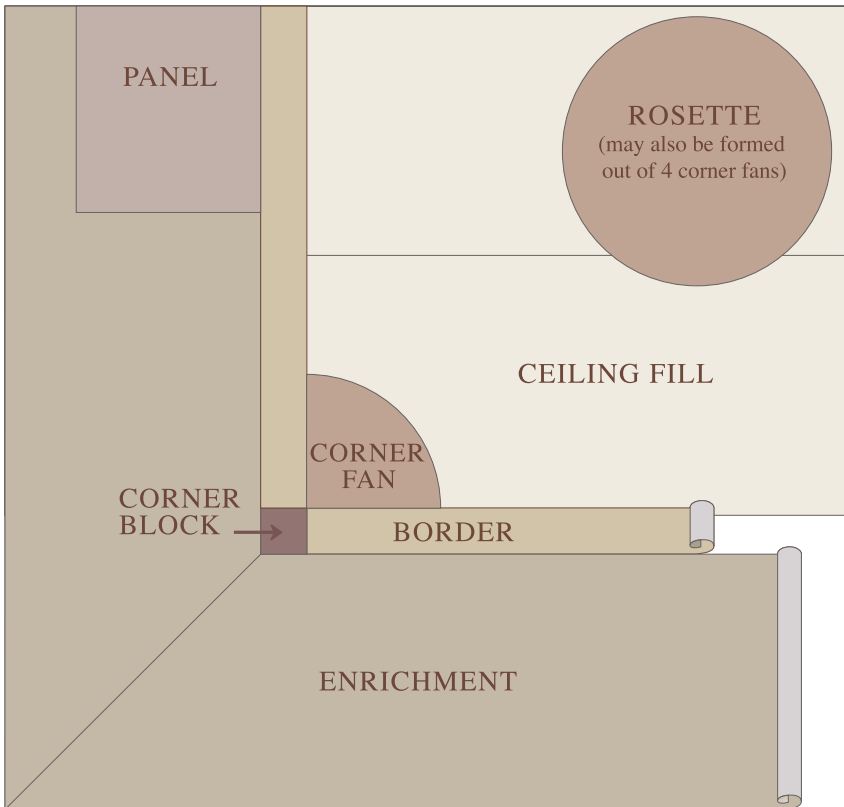
Our Victorian Collection is divided into chapters that represent these varying design styles. Coordinated colorings run throughout the collection, making it possible to mix and match varying patterns and styles in the true spirit of Victorian eclecticism.

Table of Contents

Aesthetic Movement	5-8
Anglo-Japanese	9-12
Neo-Grec	13-16
Dresser Tradition 1	17-20
Dresser Tradition 2	21-24
Fenway	25-28
Woodland	29-32
Morris Tradition	33-37
How to Measure	38
How to Order	39

Technical drawing of a door and wall assembly. The drawing is divided into three horizontal sections: FRIEZE (top), WALL FILL (middle), and DADO (bottom). The door is shown on the left, featuring a central panel with four rectangular sections and a handle. The wall is shown on the right, with a vertical line indicating the door frame. The drawing includes detailed cross-sections of the door frame, wall, and floor, showing the internal structure and materials. The door frame is labeled with '1' and '2'.

Wall Fill The portion of the wall between the dado and the frieze.





Aesthetic Movement

Roomset

The “Aesthetic Movement” emerged in the interiors and decorative arts of England and America in the last quarter of the 19th century. Strongly influenced by Japanese design, the Movement enthusiastically upheld the notion that artfully ornamented interiors were essential to quality living.

Our idealized Aesthetic roomset is composed of historically accurate patterns that reflect the finest English and American design of the period. Patterns from this roomset can be freely interchanged with patterns from the companion Anglo-Japanese Roomset.

Aesthetic Movement Wall Elements



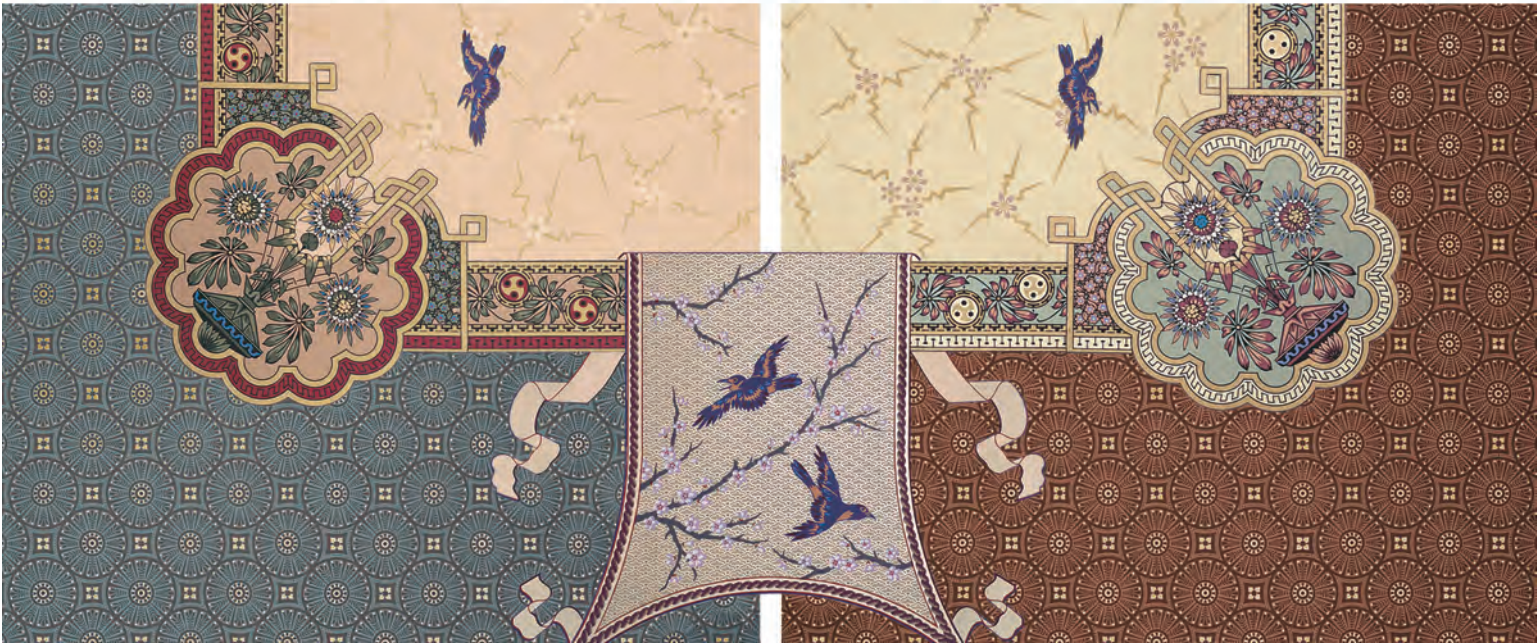
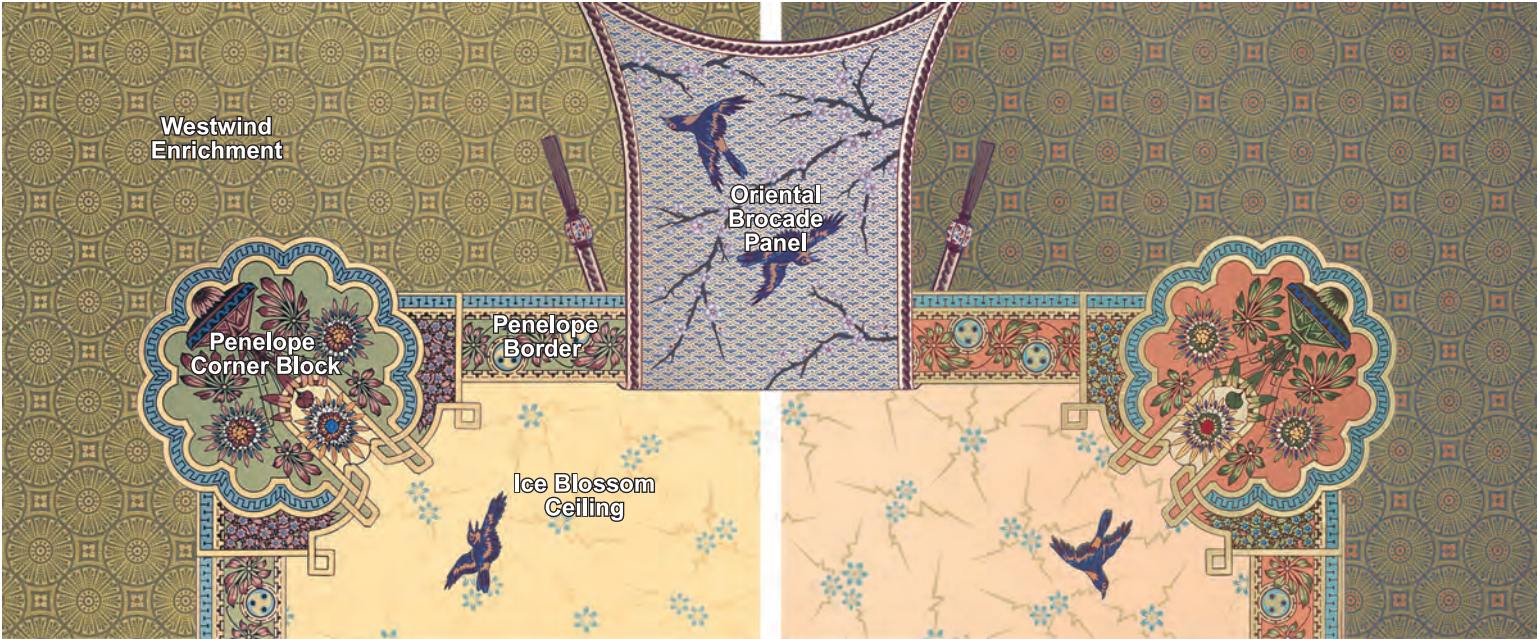
Pattern	Code	Burgundy	Aesthetic Green	Terra Cotta	Eucalyptus	Sample Cost
Cherry Blossom	CBW	130	410	210	550	1.00
Emelita's Frieze	EMF	130	410	210	550	3.00
SAMPLE KIT*	AMK	130	410	210	550	6.00

* Sample Kits are sold individually by color series, and contain both wall and ceiling elements.

Aesthetic Movement Ceiling Elements

Aesthetic Green

Terra Cotta



Burgundy

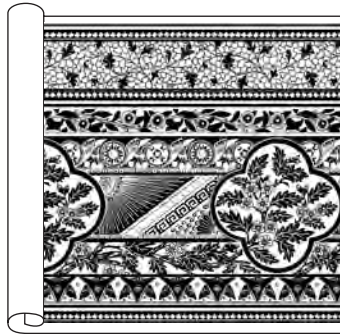
Eucalyptus

Pattern	Code	Burgundy	Aesthetic Green	Terra Cotta	Eucalyptus	Sample Cost
Ice Blossom Ceiling	ICC	110	310	250	450	1.00
Oriental Brocade Panel**	OBP	-	-	-	-	†
Penelope Border	PEB	110	410	210	550	1.00
Penelope Corner Block	PET	110	410	210	550	†
Westwind Enrichment	WWE	550	410	650	150	1.00

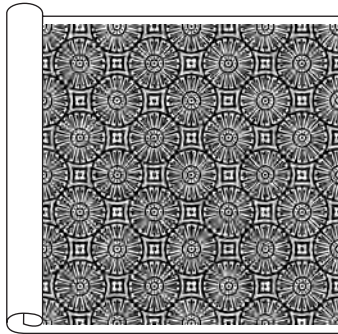
** NOTE: Panel is available in two colorways, which are both interchangeable with any of the four color series choices above. OBP-410 is predominantly Aesthetic Green and Gold; OBP-610 is predominantly Gray-blue and Gold.
 † Due to large scale, these patterns are not available as samples.

Aesthetic Movement Product Information

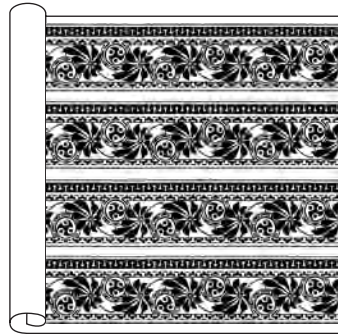
The icons below illustrate how each pattern is handprinted on an untrimmed 30" wide roll of paper. Please note that borders are printed in multiple strips.



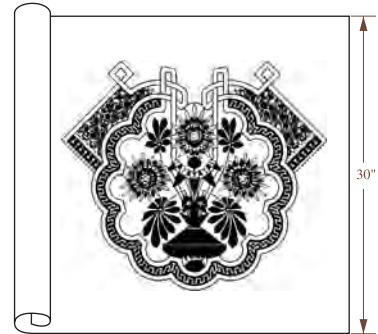
Emelita's Frieze (EMF) Price Code: S
Trims to 19", 18", or 15-1/2" high without various borders; upper border 6" wide
Repeat size 21-1/2"



Westwind Enrichment (WWE)
Price Code: P. Sold by yard: 27" wide
Repeat size 6-3/4"



Penelope Border (PEB) Price Code: R
Four 6" wide borders per width; each border can also be trimmed to 5" wide, which yields an additional 1" wide border
Repeat size 9"



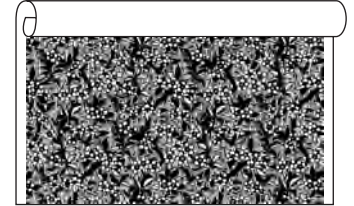
Penelope Corner Block (PET)
Price Code: T. Forms turning element for 6" wide border (PEB). Rounded central element 18-3/4" diameter, not including side bracket elements where borders attach.



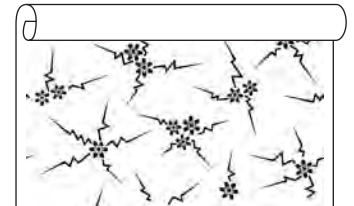
Emelita's Frieze was reproduced from an 1880s original in the Cohen-Bray house, Oakland, California.



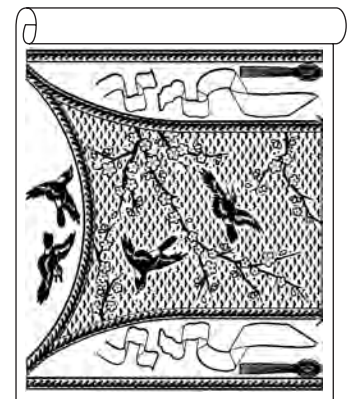
A separate piece is required for each color in a pattern. All of the artwork in our Victorian Collection was painstakingly cut or painted by hand.



Cherry Blossom (CBW) Price Code: F
Sold by the roll: 30 sq. ft.
Repeat size 13-1/2"



Ice Blossom Ceiling (ICC)
Price Code: B. Sold by the roll: 30 sq. ft.
Repeat size 27"



Oriental Brocade Panel (OBP) Price Code: U. Width of panel varies from 18" to 28-1/2" wide; height of panel can vary by trimming from maximum of 27" to minimum of 22". Accessory elements shown around panel are intended to be cut out separately and decouped in a variety of ways (refer to examples on p. 7).

Questions? Give us a call at (707) 746-1900 (Mon.-Fri., 9-5 PST) or e-mail us anytime at info@bradbury.com

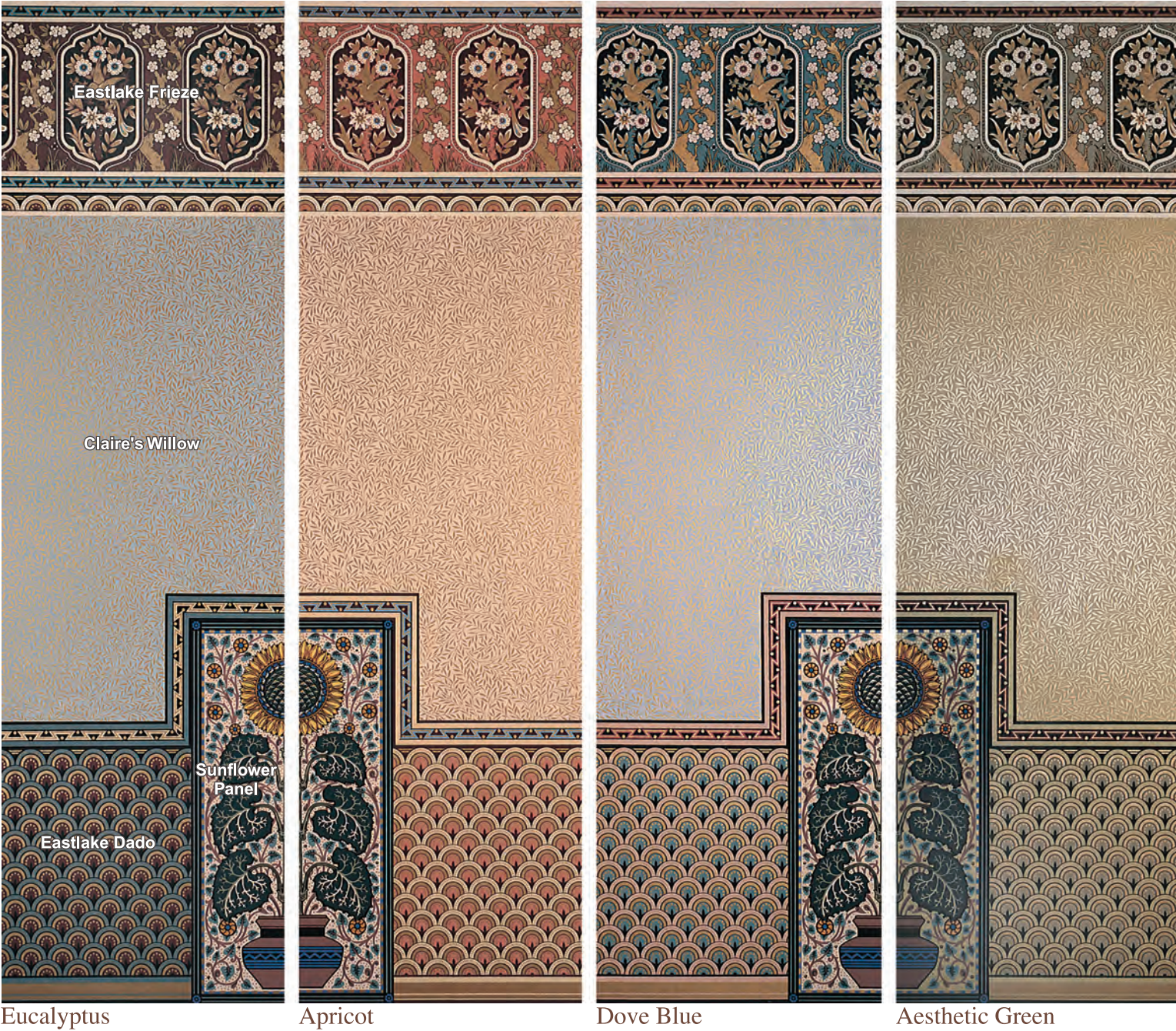


Anglo-Japanese Roomset

The “Anglo-Japanese” Style introduced the delicate and ageless simplicity of Japanese design into a mid-19th century world full of ponderous historical revivals. Associated with the “Aesthetic Movement,” which was championed by luminaries such as Oscar Wilde and James McNeil Whistler, the style first took root in England in the 1860s and spread quickly to America over the next two decades.

The popularity of “all things Japanese” became a mania in the 1880s on both shores. American Eastlake interiors of this period typically were influenced by the Anglo-Japanese style through ebonized “art” furniture, stylized flat patterning in fabrics and wallpapers, the trademark motifs of the sunflower and lily, and a unique color palette inspired by Japanese woodblock prints.

Anglo-Japanese Wall Elements



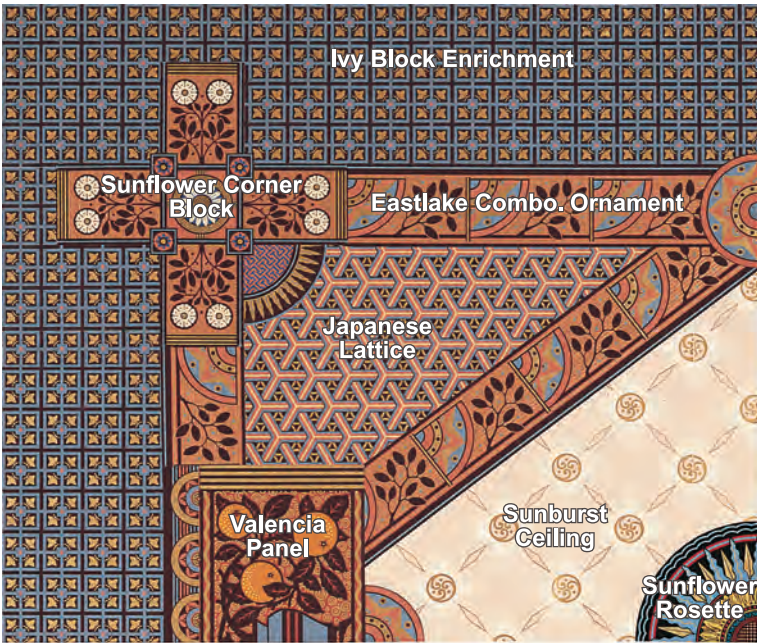
Pattern	Code	Eucalyptus	Apricot	Dove Blue	Aesthetic Green	Sample Cost
Claire's Willow	CWW	550	250	610	410	1.00
Eastlake Dado	ELD	550	250	610	410	3.00
Eastlake Frieze	ELF	550	250	610	410	3.00
Sunflower Panel	SFP	250	250	250	410	†
SAMPLE KIT*	AJK	550	250	610	410	10.00

* Sample Kits are sold individually by color series, and contain both wall and ceiling elements.

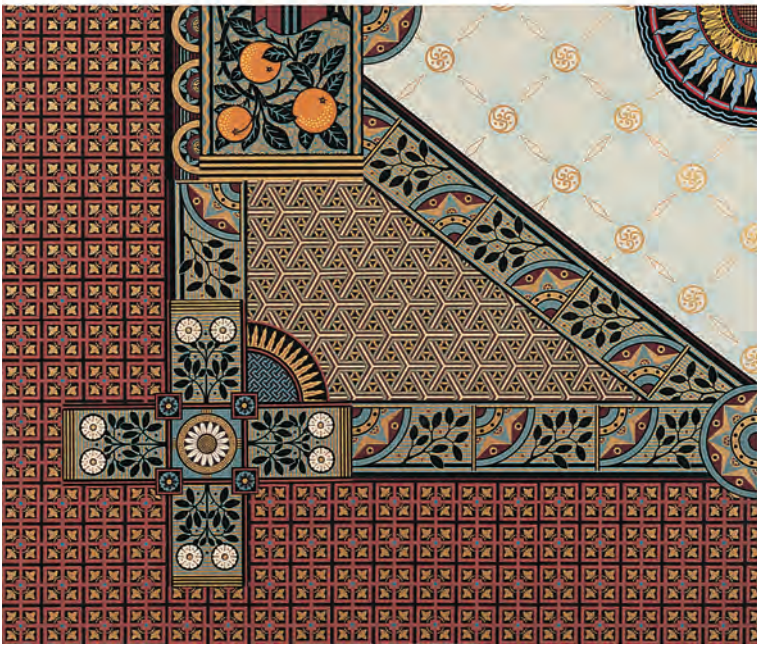
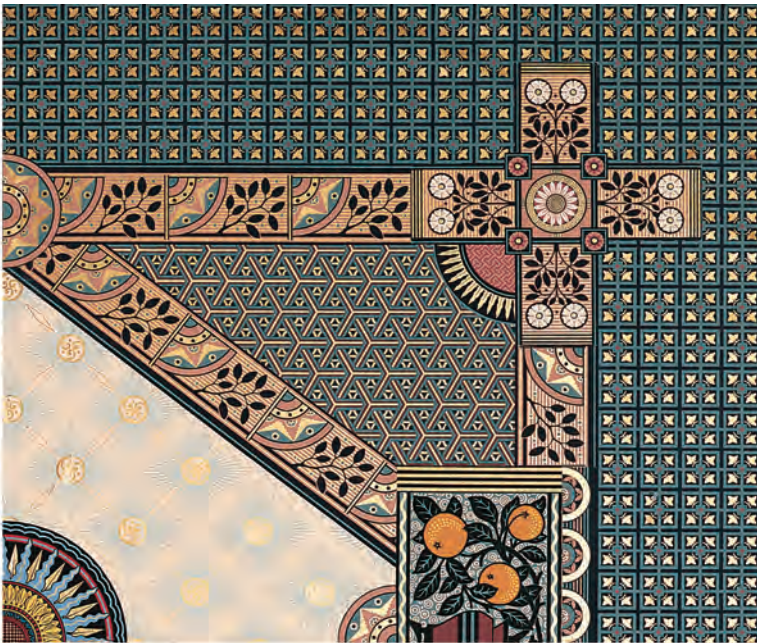
† Due to large scale, these patterns are not available as samples.

Anglo-Japanese Ceiling Elements

Apricot



Dove Blue



Eucalyptus



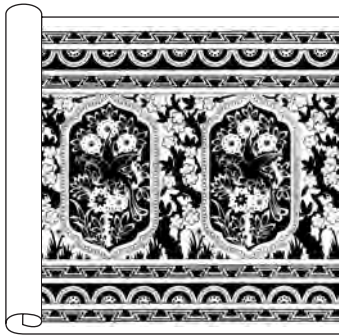
Aesthetic Green

Pattern	Code	Eucalyptus	Apricot	Dove Blue	Aesthetic Green	Sample Cost
Eastlake Comb. Ornament	ECB	550	250	120	410	1.00
Ivy Block Enrichment	IBE	120	620	550	410	1.00
Japanese Lattice Wall	JLW	410	250	550	410	1.00
Sunburst Ceiling	SBC	550	250	260	310	1.00
Sunflower Corner Block	SFT	550	250	120	410	†
Sunflower Rosette	SFR	610	610	610	410	†
Valencia Panel	VLP	550	250	550	410	1.00

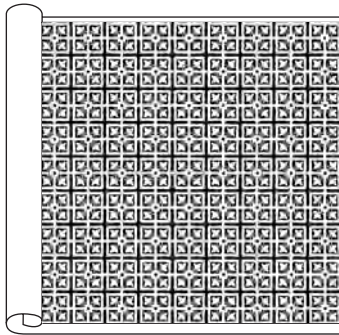
† Due to large scale, these patterns are not available as samples.

Anglo-Japanese Product Information

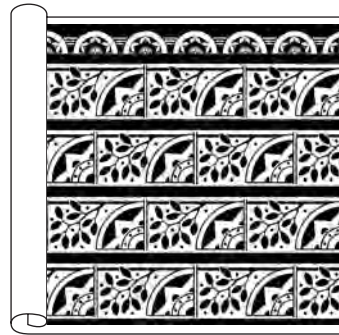
The icons below illustrate how each pattern is handprinted on an untrimmed 30" wide roll of paper. Please note that borders are printed in multiple strips.



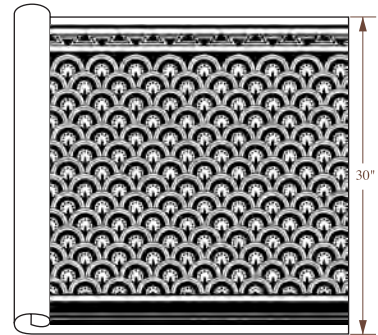
Eastlake Frieze (ELF) Price Code: R
Height can vary from 18" to 25-1/2" by trimming adjacent borders; can also be used as a dado. Repeat 12"



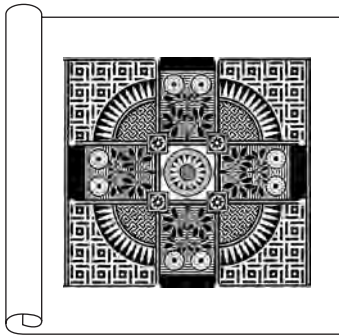
Ivy Block Enrichment (IBE)
Price Code: Q. Sold by the yard; 27" wide. May also be used as a dado or trimmed into borders. Repeat size 3"



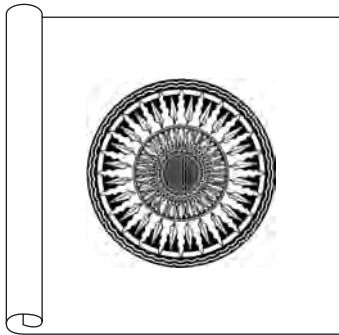
Eastlake Combination Ornament (ECB)
Price Code: Q. Four 6" borders & single 3" border per width. Repeat size 9"



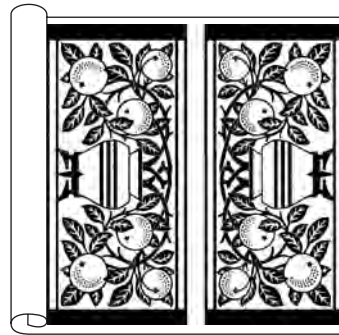
Eastlake Dado (ELD) Price Code: Q
26" high. Repeat size 3"



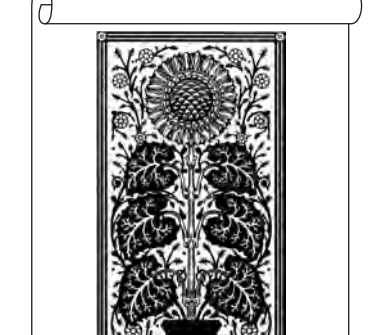
Sunflower Corner Block (SFT)
Price Code: R. Trims to 21" X 21"
1 block per yard



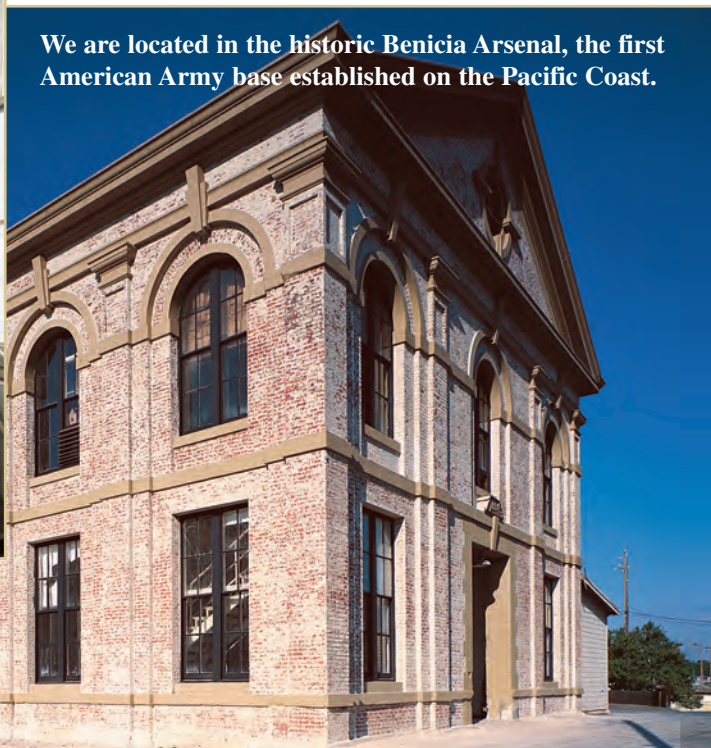
Sunflower Rosette (SFR) Price Code: R
1 rosette per yard, 18" diameter. May also be trimmed into halves and quarters.



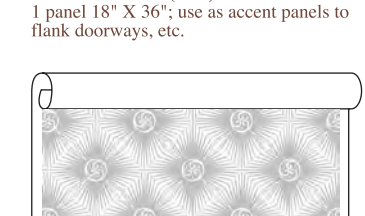
Valencia Panel (VLP) Price Code: S
Each panel trims to 12" X 27". Two panels per yard. Use as ceiling elements or above doors or windows.



Sunflower Panel (SFP) Price Code: U
1 panel 18" X 36"; use as accent panels to flank doorways, etc.



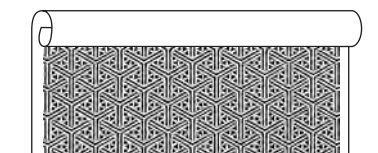
We are located in the historic Benicia Arsenal, the first American Army base established on the Pacific Coast.



Sunburst Ceiling (SBC) Price Code: B
Sold by the roll: 30 sq. ft. Repeat size 9"



Claire's Willow (CWW) Price Code: A
Sold by the roll: 30 sq. ft. May also be used as a ceiling fill. Repeat size 13-1/2"



Japanese Lattice (JLW) Price Code: E
Sold by the roll: 30 sq. ft. Use in accent panels on walls & ceilings or as a dado. Repeat size 2-1/2"

Questions? Give us a call at (707) 746-1900 (Mon.-Fri., 9-5 PST) or e-mail us anytime at info@bradbury.com



Neo-Grec

Roomset

The name "Neo-Grec" (or New Greek) refers to a popular 19th-century design trend that was inspired by archaeological discoveries from the ancient classical world. This concept first began with the Renaissance in 16th century Italy, and continued to influence architecture and decorative arts for the next three centuries.

Neo-Classical taste inspired the Louis XVI and Empire styles of France, and England's Georgian, Adam and Regency styles of the 18th and early 19th centuries. The taste translated to America as the Federal and American Empire styles. It was on this foundation that, in the late 1880s, prominent architects George and Maurice Ashdown Audsley of London and New York created the designs used in our roomset, continuing the timeless appeal of classical Greek ornamentation.

Neo-Grec Wall Elements



Terra Cotta



Cream & Gilt

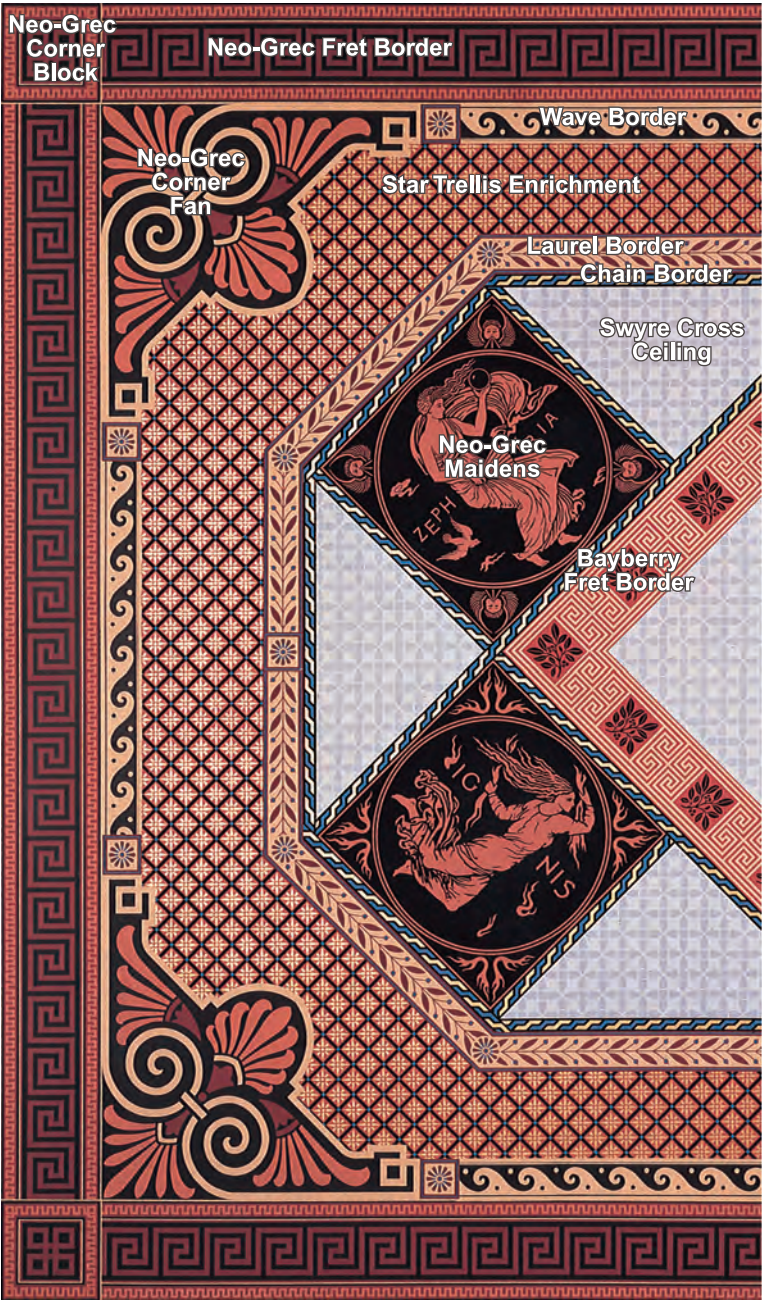


Jasper Green

Pattern	Code	Terra Cotta	Cream & Gilt	Jasper Green	Sample Cost
Anthemion Fill	AFW	210	310	510	1.00
Neo-Grec Dado	NGD	210	310	510	3.00
Neo-Grec Frieze	NGF	210	310	510	3.00
SAMPLE KIT*	NGK	210	310	510	13.00

* Sample Kits are sold individually by color series, and contain both wall and ceiling elements.

Neo-Grec Ceiling Elements



Terra Cotta

Jasper Green



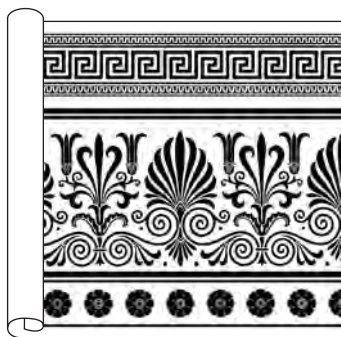
Cream & Gilt

Pattern	Code	Terra Cotta	Cream & Gilt	Jasper Green	Sample Cost
Bayberry Fret Border	BFB	210	220	230	1.00
Chain Border	CHB	610	250	150	1.00
Neo-Grec Corner Blocks	NGC	210	310	510	1.00
Neo-Grec Corner Fan	NGT	210	310	510	†
Neo-Grec Fret Border	NGB	210	310	510	1.00
Laurel Border	LRB	350	350	510	1.00
Neo-Grec Maidens TET, ZPT, AQT, IGT		210	310	510	†
Star Trellis Enrichment	STE	210	250	150	1.00
Swyre Cross	SWC	610	310	250	1.00
Wave Border	WVB	350	220	510	1.00

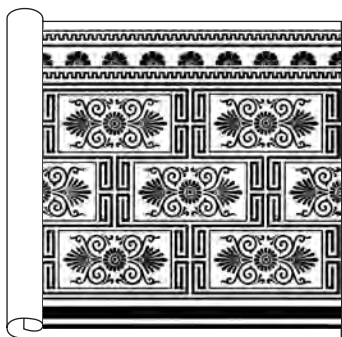
† Due to large scale, these patterns are not available as samples.

Neo-Grec Product Information

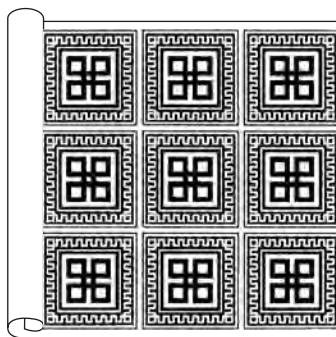
The icons below illustrate how each pattern is handprinted on an untrimmed 30" wide roll of paper. Please note that borders are printed in multiple strips.



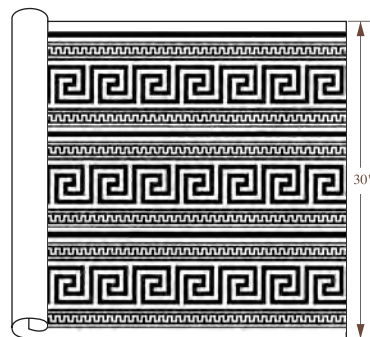
Neo-Grec Frieze (NGF) Price Code: Q
Trim to 14" or 18" high without Fret Border
Repeat size 13-1/2"



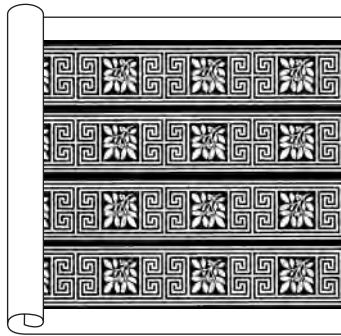
Neo-Grec Dado (NGD) Price Code: Q
27" high. Repeat size 13-1/2"



Neo-Grec Corner Block (NGC) Price Code: Q. Three blocks per width.
Each block 8" X 8"; 12 blocks per yard



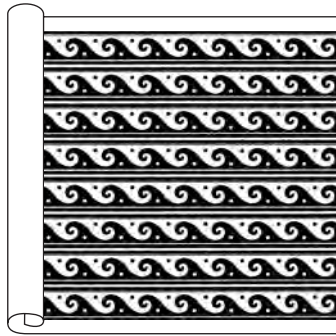
Neo-Grec Fret Border (NGB)
Price Code: Q. Three 8-1/2" borders per width. Repeat size 4"



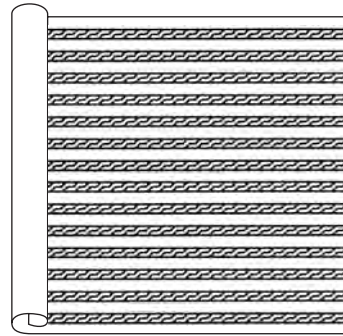
Bayberry Fret Border (BFB)
Price Code: Q. Four 5-1/2" borders per width. Repeat size 8"



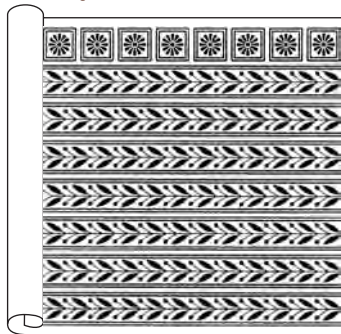
Neo-Grec Corner Fan (NGT)
Price Code: Q. 24" X 24". One fan per yard



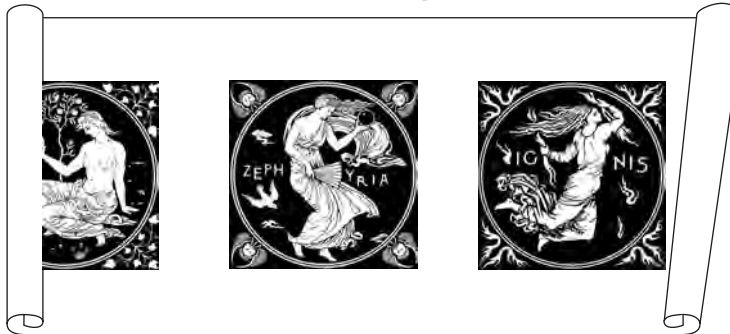
Wave Border (WVB) Price Code: P
Eight 3" borders per width
Repeat size 3-1/2"



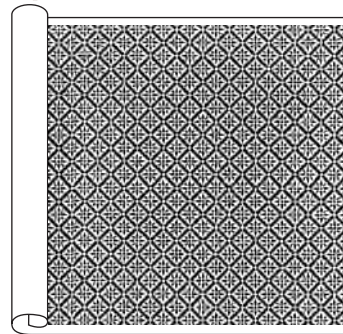
Chain Border (CHB) Price Code: Q
Fourteen 1" borders per width
Repeat size 2-1/4"



Laurel Border (LRB) Price Code: Q.
Seven 3" borders plus one row of corner blocks per width (10 blocks on a yard)
Repeat size 2-1/4"



Neo-Grec Maidens, representing earth (TET), air (ZPT), fire (IGT), and water (AQT).
Price Code: Q (each). Maidens measure 18" X 18" (each).



Star Trellis Enrichment (STE)
Price Code: Q. Sold by the yard: 27" wide
Repeat size 2-1/4"



Anthemion Wall Fill (AFW)
Price Code: A. Sold by the roll: 30 sq. ft.
Repeat size 9"



Swyre Cross Ceiling (SWC)
Price Code: A. Sold by the roll: 30 sq. ft.
Repeat size 2"



Hanging a Neo-Grec parlor in the Mainstay Inn, Cape May, N.J.

Questions? Give us a call at (707) 746-1900 (Mon.-Fri., 9-5 PST) or e-mail us anytime at info@bradbury.com



Dresser Tradition 1

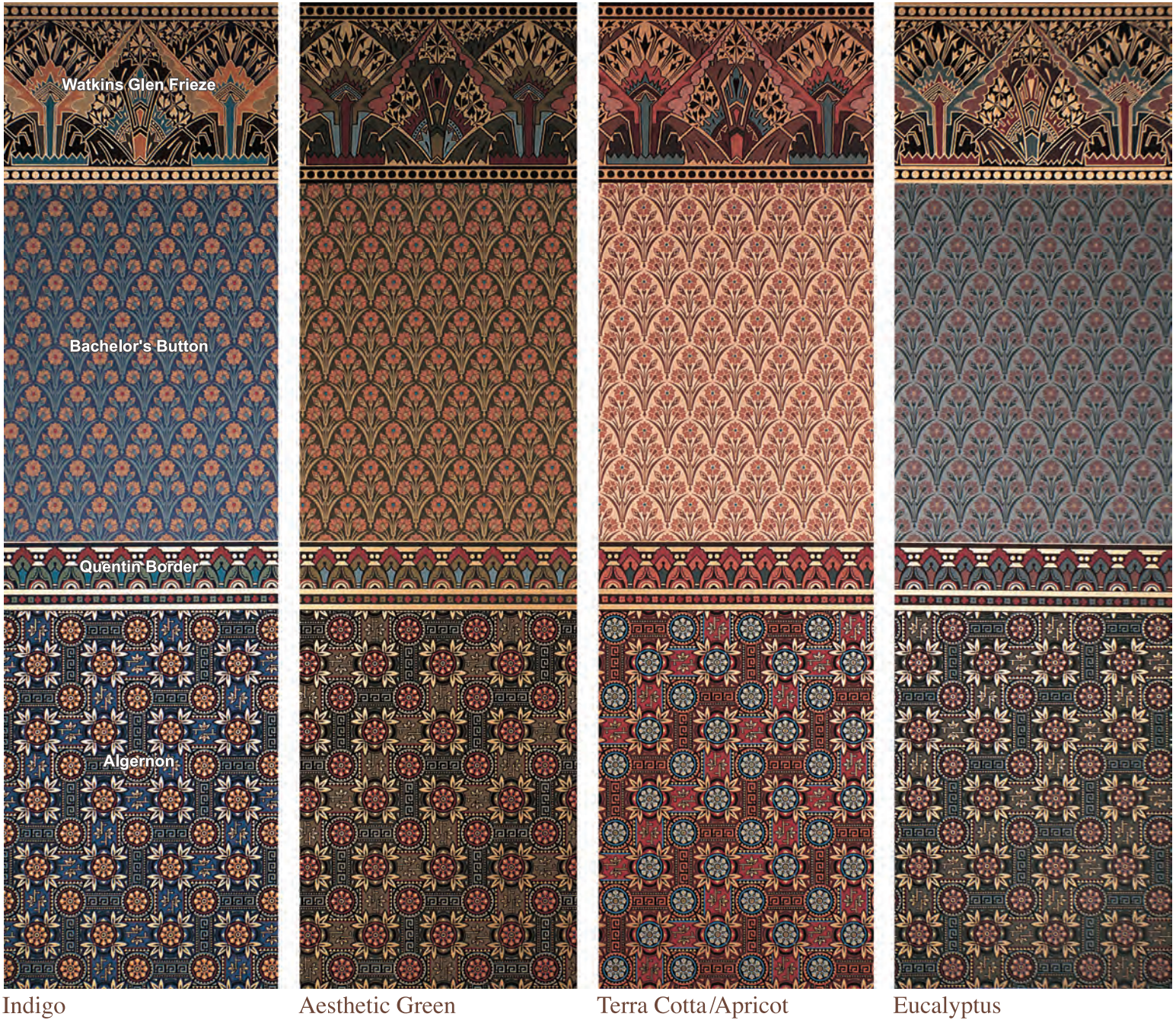
Roomset

Christopher Dresser (1834-1904) was one of the most startlingly original designers of Victorian England. A botanist and world traveler, he combined his own inventive abstractions of natural forms with the diverse design motifs of Islamic, Gothic, Oriental and American Indian art. Much of Dresser's work seems to transcend his time, foreshadowing the Art Deco style to come in the 20th century.

Dresser expounded his ideas in several successful books. He helped to bridge the gap between Art and Industry through collaboration with commercial manufacturers who produced his signature designs for metalwork, glass, ceramics, textiles and wallpaper.

Dresser Tradition 1

Wall Elements



Pattern	Code	Indigo	Aesthetic Green	Terra Cotta/ Apricot	Eucalyptus	Sample Cost
Algernon	AGW	650	410	210	550	1.00
Bachelor's Button	BBW	650	410	250	550	1.00
Quentin Border	QUB	650	410	210	550	1.00
Watkins Glen Frieze	WGF	650	410	250	550	3.00
SAMPLE KIT*	DWK	650	410	250	550	10.00

* Sample Kits are sold individually by color series, and contain both wall and ceiling elements.

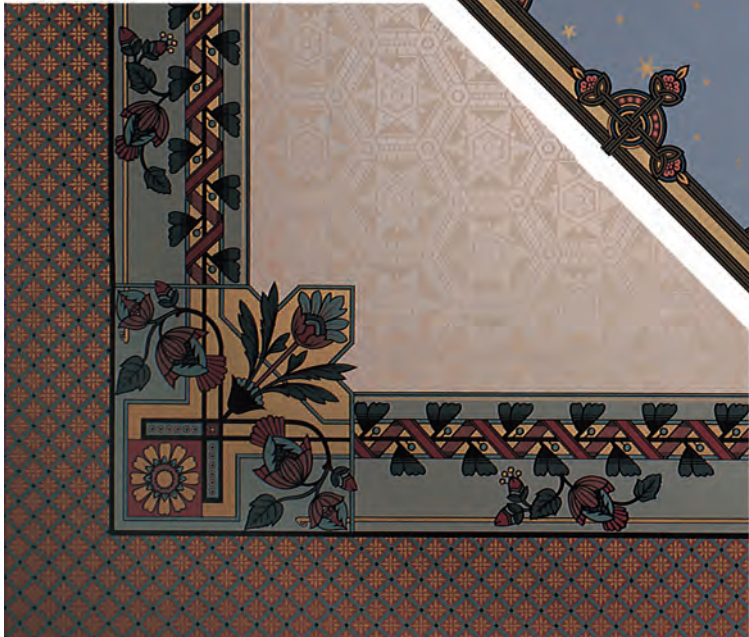
Dresser Tradition 1

Ceiling Elements

Terra Cotta/Apricot



Aesthetic Green



Eucalyptus



Indigo

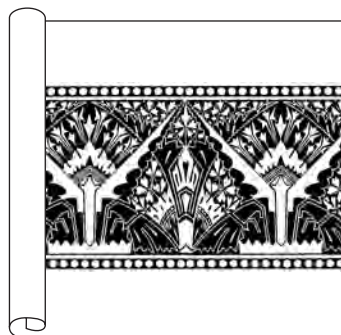
Pattern	Code	Indigo	Aesthetic Green	Terra Cotta/ Apricot	Eucalyptus	Sample Cost
Dresser Ceiling	DSC	250	450	610	110	1.00
Fallon Border	FAB	650	410	250	550	3.00
Fallon Corner Block	FAT	650	410	250	550	†
Pinstripe Border	PNB	-	410	-	-	1.00
Pinstripe Corner Turn	PNT	-	410	-	-	3.00
Random Star	RSC	Light Blue – 550				1.00
Star Trellis Enrichment	STE	220	410	550	120	1.00

† Due to large scale, these patterns are not available as samples.

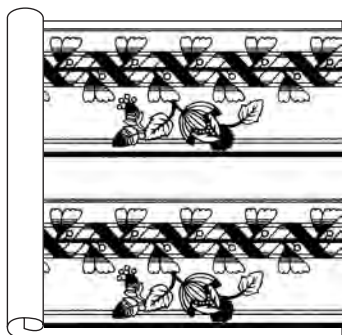
Dresser Tradition 1

Product Information

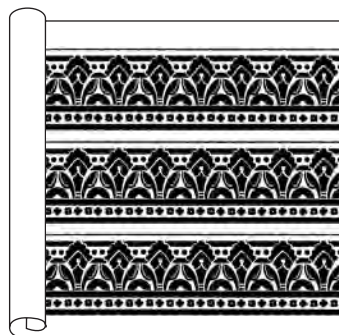
The icons below illustrate how each pattern is handprinted on an untrimmed 30" wide roll of paper. Please note that borders are printed in multiple strips.



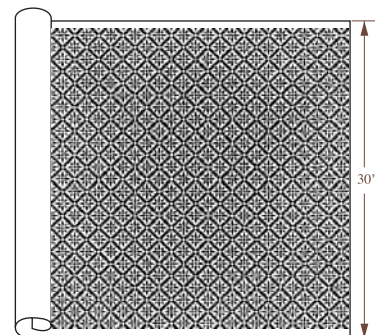
Watkins Glen Frieze (WGF) Price Code: S
18" high; 16-1/2" or 15" high without one or both 1-3/4" wide edge borders
Repeat size 18-1/4"



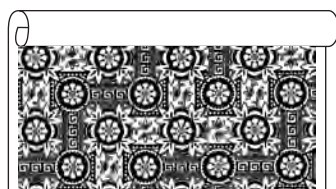
Fallon Border (FAB) Price Code: S
Two 10-1/2" borders per width; use with matching corner block (FAT)
Repeat size 27"



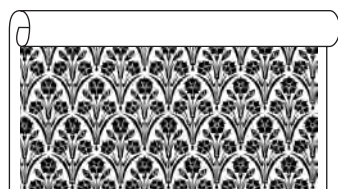
Quentin Border (QUB) Price Code: R
Three 6-3/4" borders per width
Repeat size 3-1/2"



Star Trellis Enrichment (STE) Price Code: Q
Sold by the yard: 27" wide
Repeat size 2-1/4"



Algernon (AGW) Price Code: G
Sold by the roll: 30 sq. ft. May be hung horizontally as a dado or vertically as a wall fill. Repeat size 13-1/2"



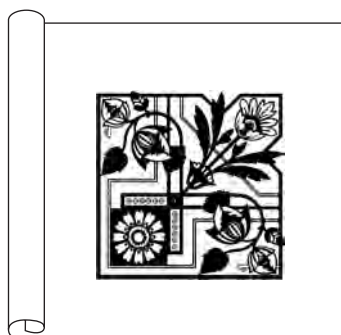
Bachelor's Button (BBW) Price Code: D
Sold by the roll: 30 sq. ft.
Repeat size 7-1/2"



Random Star Ceiling (RSC)
Price Code: A. Sold by the roll: 30 sq. ft.
Repeat size: random



Dresser Ceiling (DSC) Price Code: A
Sold by the roll: 30 sq. ft. Repeat size 8"



Fallon Corner Block (FAT) Price Code: S
Trims to 18-1/4" by 18-1/4"
One block per yard



(above) A San Francisco entry hall designed by the Newsom brothers, California's premier 19th century residential architects.



(left) Algernon in the Indigo colorway (AGW-650).

Questions? Give us a call at (707) 746-1900 (Mon.-Fri., 9-5 PST) or e-mail us anytime at info@bradbury.com



Dresser Tradition 2

Roomset

Christopher Dresser traveled to America in 1876 to attend the Philadelphia Centennial Exhibition en route to Japan. In contrast to Morris, Dresser could see a future in which high-quality design was linked to machine production, and he happily sold a number of his designs to American manufacturers for that purpose.

Dresser died in obscurity and it was not until the end of the 20th century that his position as a design visionary was fully recognized.

Dresser Tradition 2

Wall Elements



Victory Frieze



Roland

Terra Cotta/Burgundy





Ashes of Rose





Jasper Green





Indigo

(Alternate Wall Fill)



Lily

Indigo



Jasper Green



Ashes of Rose



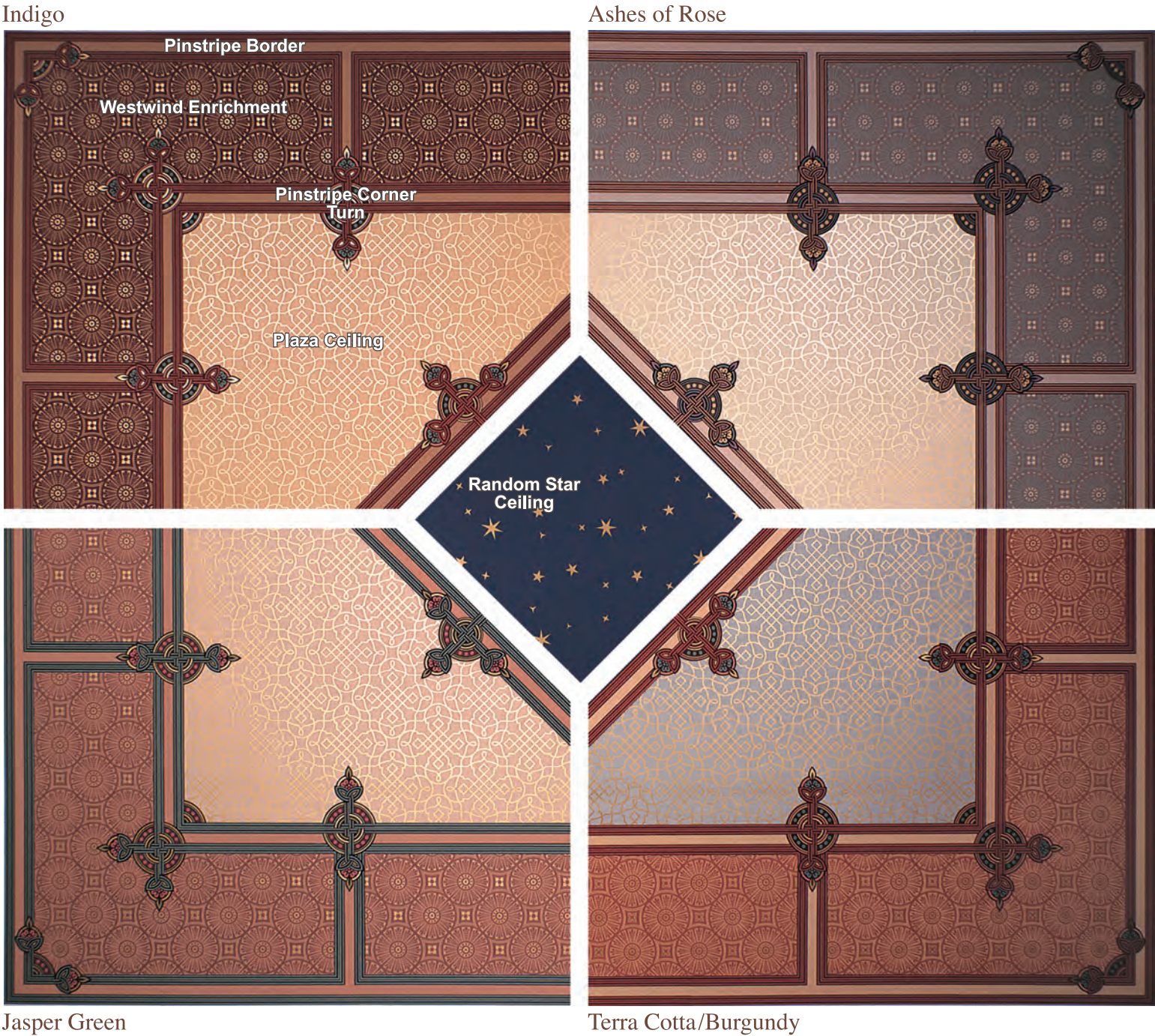
Terra Cotta/Burgundy

Pattern	Code	Terra Cotta/ Burgundy	Ashes of Rose	Jasper Green	Indigo	Sample Cost
Lily	LYW	210	550	410	610	1.00
Roland	RLW	130	110	510	610	1.00
Victory Frieze	VIF	210	110	510	650	3.00
SAMPLE KIT*	DVK	210	110	510	610	10.00

*Sample Kits are sold individually by color series, and contain both wall and ceiling elements.

Dresser Tradition 2

Ceiling Elements



Pattern	Code	Terra Cotta/ Burgundy	Ashes of Rose	Jasper Green	Indigo	Sample Cost
Pinstripe Border	PNB	250	110	550	210	1.00
Pinstripe Corner	PNT	210	110	550	210	3.00
Plaza Ceiling	PLC	610	310	110	250	1.00
Random Star	RSC	Midnight Blue – 650				1.00
Westwind Enrichment	WWE	250	170	110	210	1.00

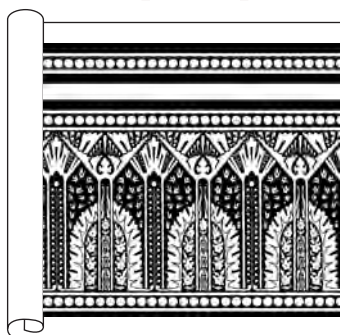
Dresser Tradition 2

Product Information

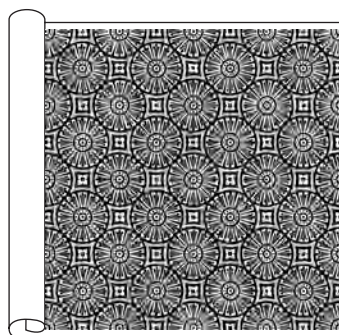
The icons below illustrate how each pattern is handprinted on an untrimmed 30" wide roll of paper. Please note that borders are printed in multiple strips.



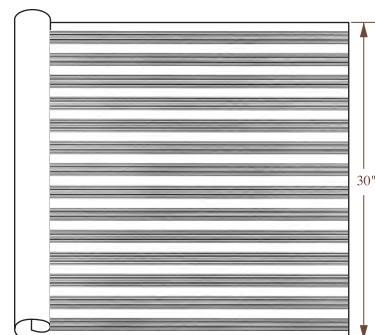
Pinstripe Corner Turn (PNT)
Price Code: S. Five corner turns per yard; each element trims to 5-1/2" diameter (at center)



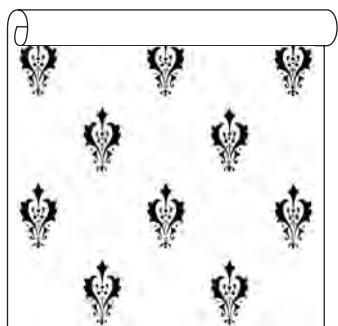
Victory Frieze (VIF) Price Code: T. Trims to 18" high with two 1-3/4" edge borders
Repeat size 26"



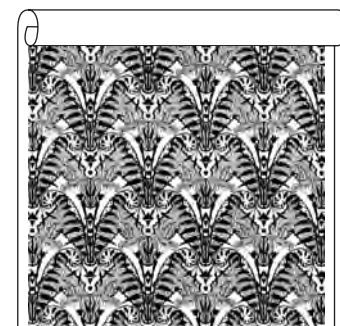
Westwind Enrichment (WWE)
Price Code: P. Sold by the yard: 27" wide
Repeat size 6-3/4"



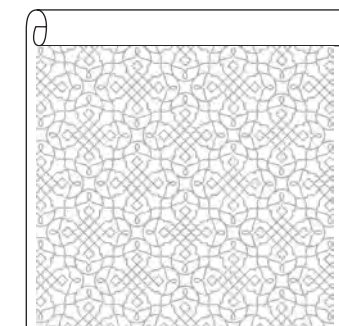
Pinstripe Border (PNB) Price Code: P
Fourteen (1" wide) borders or seven (3" wide/double) borders per width; use with corner block (PNT)



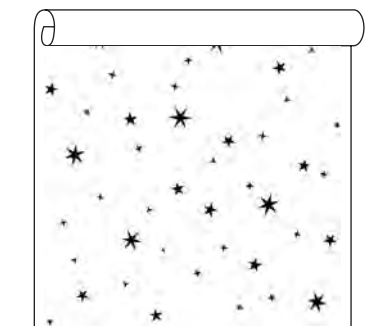
Roland (RLW) Price Code: C
Sold by the roll: 30 sq. ft.
Repeat size 10-3/4"



Lily (LYW) Price Code: D
Sold by the roll: 30 sq. ft.
Repeat size 10-3/4"-1/2 drop



Plaza Ceiling (PLC) Price Code: A
Sold by the roll: 30 sq. ft.
Repeat size 9"



Random Star Ceiling (RSC)
Price Code: A. Sold by the roll: 30 sq. ft.
Repeat size: random



(above) Victory Frieze in the Indigo Colorway (VIF-650).



(right) Each color is meticulously mixed by hand before printing.

Questions? Give us a call at (707) 746-1900 (Mon.-Fri., 9-5 PST) or e-mail us anytime at info@bradbury.com



Fenway Roomset

The exotic qualities of nature were among the favorite motifs of Victorian designers, especially during the Aesthetic Movement of the 1870s and 1880s and in the emerging Art Nouveau style in the 1890s. It was also during this period that Japanese design became a strong influence in the decorative arts of Europe and America. The Iris Frieze is adapted from the work of the famous designer and illustrator Walter Crane, with whom William Morris co-founded the English Arts and Crafts Movement.

Our roomset takes its name from the word “fen” or marsh—the source of inspiration for these fanciful elements.

Fenway Wall Elements

Iris Frieze

Serpentine

Fiddlehead Dado

Eucalyptus

Aesthetic Green

Indigo

Ashes of Rose

(Alternative Wall Fill)

Neptune

Ashes of Rose

Eucalyptus

Aesthetic Green

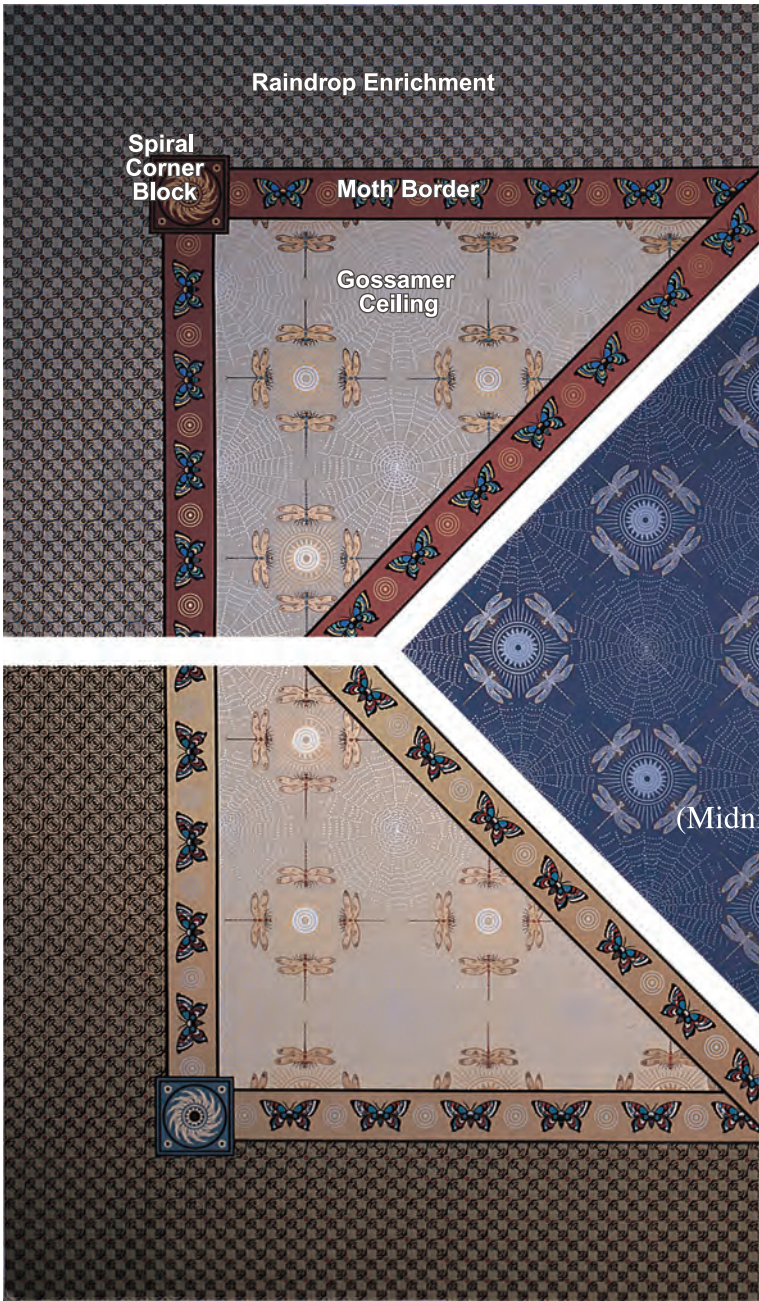
Indigo

Pattern	Code	Eucalyptus	Aesthetic Green	Indigo	Ashes of Rose	Sample Cost
Fiddlehead Dado	FHD	550	450	650	110	3.00
Iris Frieze	IRF	550	450	650	110	3.00
Neptune	NPW	550	450	210	110	1.00
Serpentine	SPW	550	450	210	110	1.00
SAMPLE KIT*	FWK	550	450	650	110	10.00

*Sample Kits are sold individually by color series, and contain both wall and ceiling elements.

Fenway Ceiling Elements

Eucalyptus



Ashes of Rose



Aesthetic Green

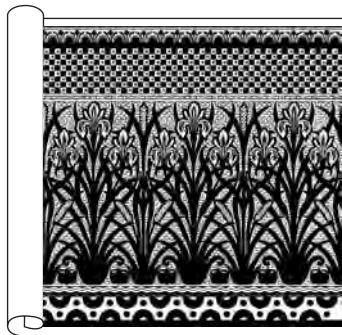
Indigo

Pattern	Code	Eucalyptus	Aesthetic Green	Indigo	Ashes of Rose	Sample Cost
Gossamer Ceiling*	GSC	450	310	610	250	1.00
Moth Border	MOB	210	750	210	110	1.00
Raindrop Enrichment	RDE	550	450	210	110	1.00
Spiral Corner Block	SPT	210	610	210	150	1.00

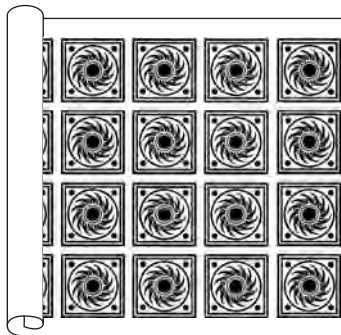
*Midnight Blue inset of Gossamer Ceiling is GSC-650

Fenway Product Information

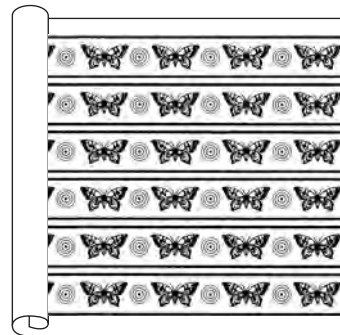
The icons below illustrate how each pattern is handprinted on an untrimmed 30" wide roll of paper. Please note that borders are printed in multiple strips.



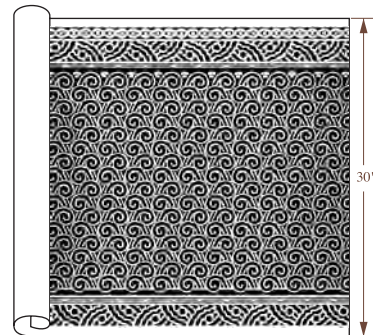
Iris Frieze (IRF) Price Code: S. Trims to 18" without borders; upper border 6" wide and lower border 3" wide. Repeat size 9"



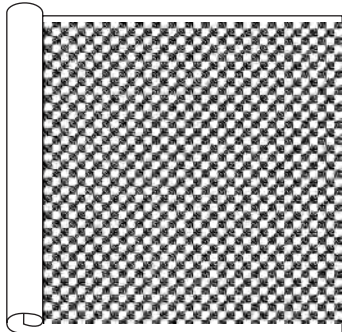
Spiral Corner Block (SPT) Price Code: P
Four blocks per width; each block 6" X 6"
20 blocks per yard



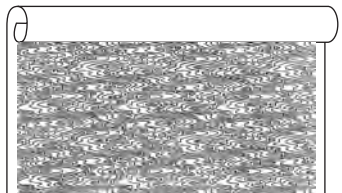
Moth Border (MOB) Price Code: R
Six 4" borders per width
Repeat size 6-3/4"



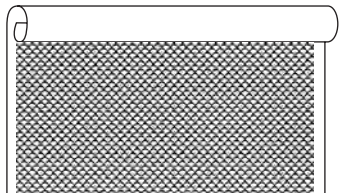
Fiddlehead Dado (FHD) Price Code: S
27" high; may be trimmed for use with lower ceilings. Repeat size 9"



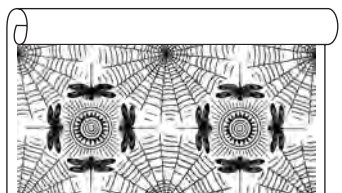
Raindrop Enrichment (RDE)
Price Code: Q. Sold by the yard: 27" wide
Repeat size 1-1/2"



Serpentine (SPW) Price Code: C
Sold by the roll: 30 sq. ft.
Repeat size 6-3/4"



Neptune (NPW) Price Code: D
Sold by the roll: 30 sq. ft.
Repeat size 13-1/2"



Gossamer Ceiling (GSC) Price Code: E
Sold by the roll: 30 sq. ft.
Repeat size 27"



(above) Iris Frieze in the Aesthetic Green colorway (IRF-450)

(right) Our papers are printed on tables that are 92' long, allowing us to create bolts of up to 6 rolls in length.



Questions? Give us a call at (707) 746-1900 (Mon.-Fri., 9-5 PST) or e-mail us anytime at info@bradbury.com



Woodland Roomset

The Victorians' love of nature, as exuberantly expressed in their interiors, provided a refuge from the often grim realities of the Industrial Revolution and the sweeping social changes of the 19th century.

In England, renowned designers William Morris and Walter Crane achieved great success for their individualistic interpretations of nature. The exquisite floral patterns produced by Morris & Co. were perfectly complemented by the whimsical animal designs that were Crane's hallmark. Their work appeared together in such interiors as Queen Victoria's Kensington Palace; we reunite their two styles once again in our Woodland Roomset. The patterns and colorings of the Woodland Roomset complement and expand the papers published in our Morris Tradition Roomset.

Woodland Wall Elements

Deer & Rabbit Frieze

Sweet Briar

Woodland Border

Eucalyptus

Ashes of Rose

Aesthetic Green

Terra Cotta

(Alternate Wall Fill)

Crab Apple

Terra Cotta

Aesthetic Green

Ashes of Rose

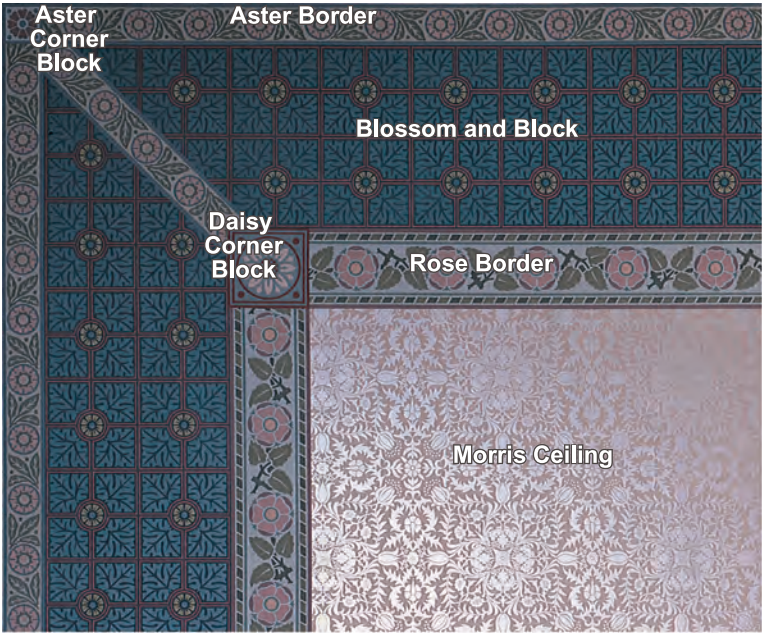
Eucalyptus

Pattern	Code	Eucalyptus	Ashes of Rose	Aesthetic Green	Terra Cotta	Sample Cost
Crab Apple	CAW	550	610	410	250	1.00
Deer & Rabbit Frieze	DRF	550	610	410	210	3.00
Sweet Briar	SRW	550	110	410	210	1.00
Woodland Border	WOB	550	610	410	210	1.00
SAMPLE KIT*	WLK	550	110	410	210	10.00

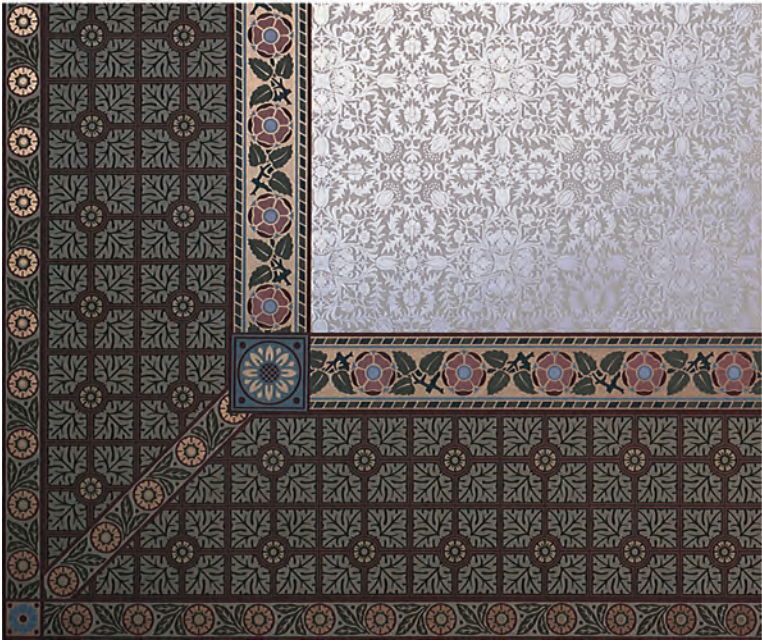
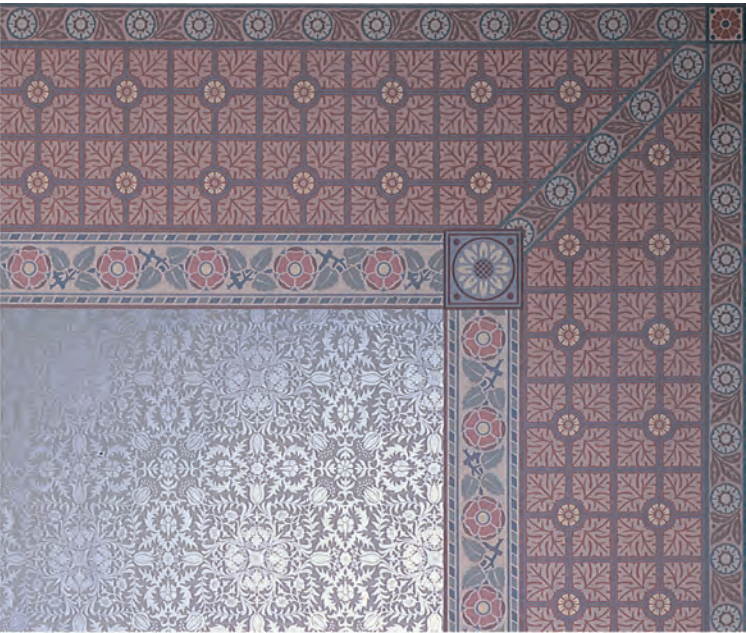
*Sample Kits are sold individually by color series, and contain both wall and ceiling elements.

Woodland Ceiling Elements

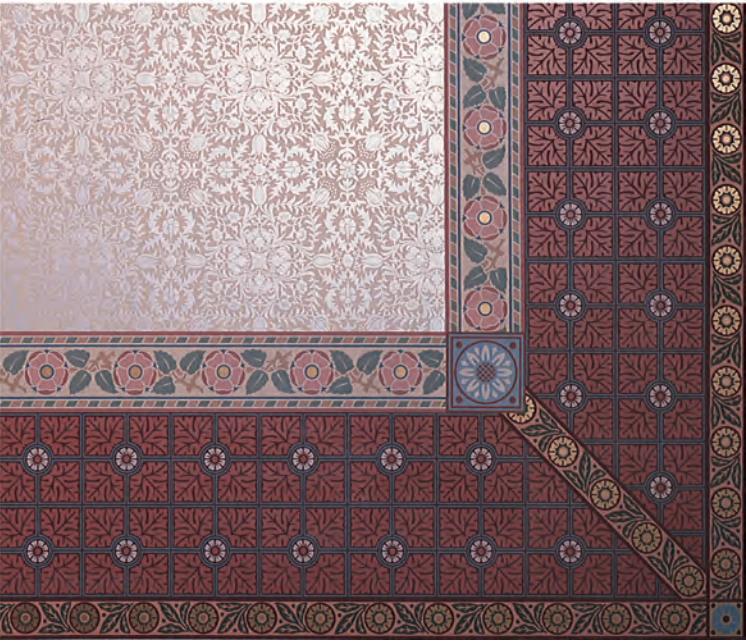
Eucalyptus



Ashes of Rose



Aesthetic Green

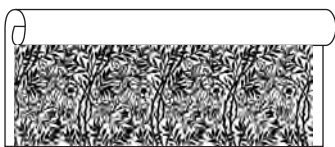


Terra Cotta

Pattern	Code	Eucalyptus	Ashes of Rose	Aesthetic Green	Terra Cotta	Sample Cost
Aster Border	ASB	550	110	410	210	1.00
Aster Corner Block	AST	610	250	550	550	1.00
Blossom and Block	BKW	550	110	410	210	1.00
Daisy Corner Block	DST	610	150	550	610	1.00
Morris Ceiling	MOC	110	610	450	250	1.00
Rose Border	ROB	550	110	410	250	1.00

Woodland Product Information

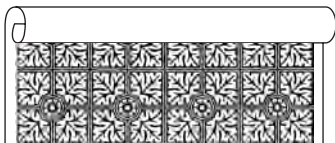
The icons below illustrate how each pattern is handprinted on an untrimmed 30" wide roll of paper. Please note that borders are printed in multiple strips.



Sweet Briar (SRW) Price Code: F
Sold by the roll: 30 sq. ft.
Repeat size 13-1/2"



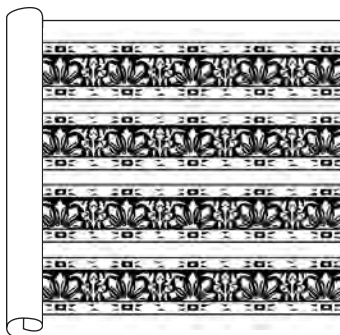
Crab Apple (CAW) Price Code: E
Sold by the roll: 30 sq. ft.
Repeat size 13-1/2"



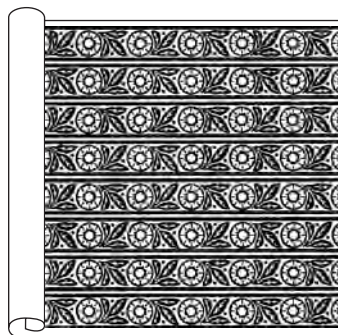
Blossom and Block (BKW) Price Code: D
Sold by the roll: 30 sq. ft. Use as ceiling enrichment, in accent panels, or as a dado.
Repeat size 6-3/4"



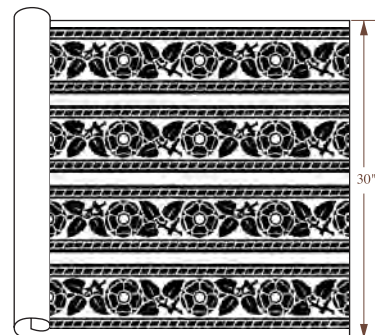
Morris Ceiling (MOC) Price Code: A
Sold by the roll: 30 sq. ft.
Repeat size 13-1/2"



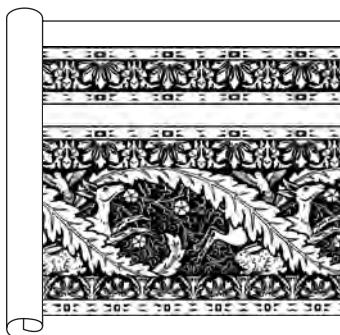
Woodland Border (WOB) Price Code: R
Four 5-1/2"-6" wide borders per width; may be trimmed to 4-1/2" or 3" wide
Repeat size 6-1/2"



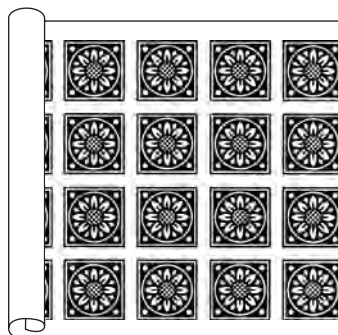
Aster Border (ASB) Price Code: Q
Eight 3" borders per width
Repeat size 9"



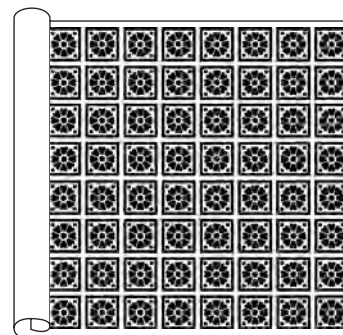
Rose Border (ROB) Price Code: S
Four 6" wide borders per width; each border can also be trimmed to 5-1/2" or 4" wide. Repeat size 13"



Deer & Rabbit Frieze (DRF) Price Code: S. Trims to 18" high (16-1/2" or 15" high without one or both narrow borders); matching border above trims to 5-1/2"-6" wide (see Woodland border)
Repeat size 19"



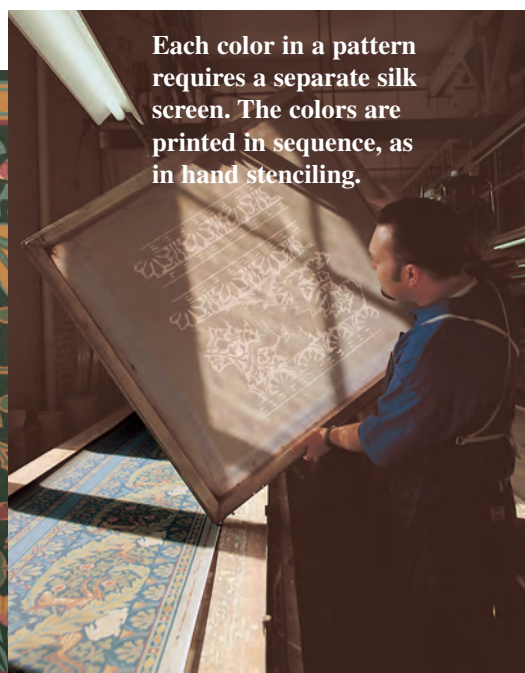
Daisy Corner Block (DST) Price Code: P
Four blocks per width; each block is 6" X 6"
20 blocks per yard



Aster Corner Block (AST) Price Code: P
Eight blocks per width; each block is 3" X 3"
88 blocks per yard



Deer & Rabbit Frieze in the Aesthetic Green colorway (DRF-410).



Each color in a pattern requires a separate silk screen. The colors are printed in sequence, as in hand stenciling.

Questions? Give us a call at (707) 746-1900 (Mon.-Fri., 9-5 PST) or e-mail us anytime at info@bradbury.com



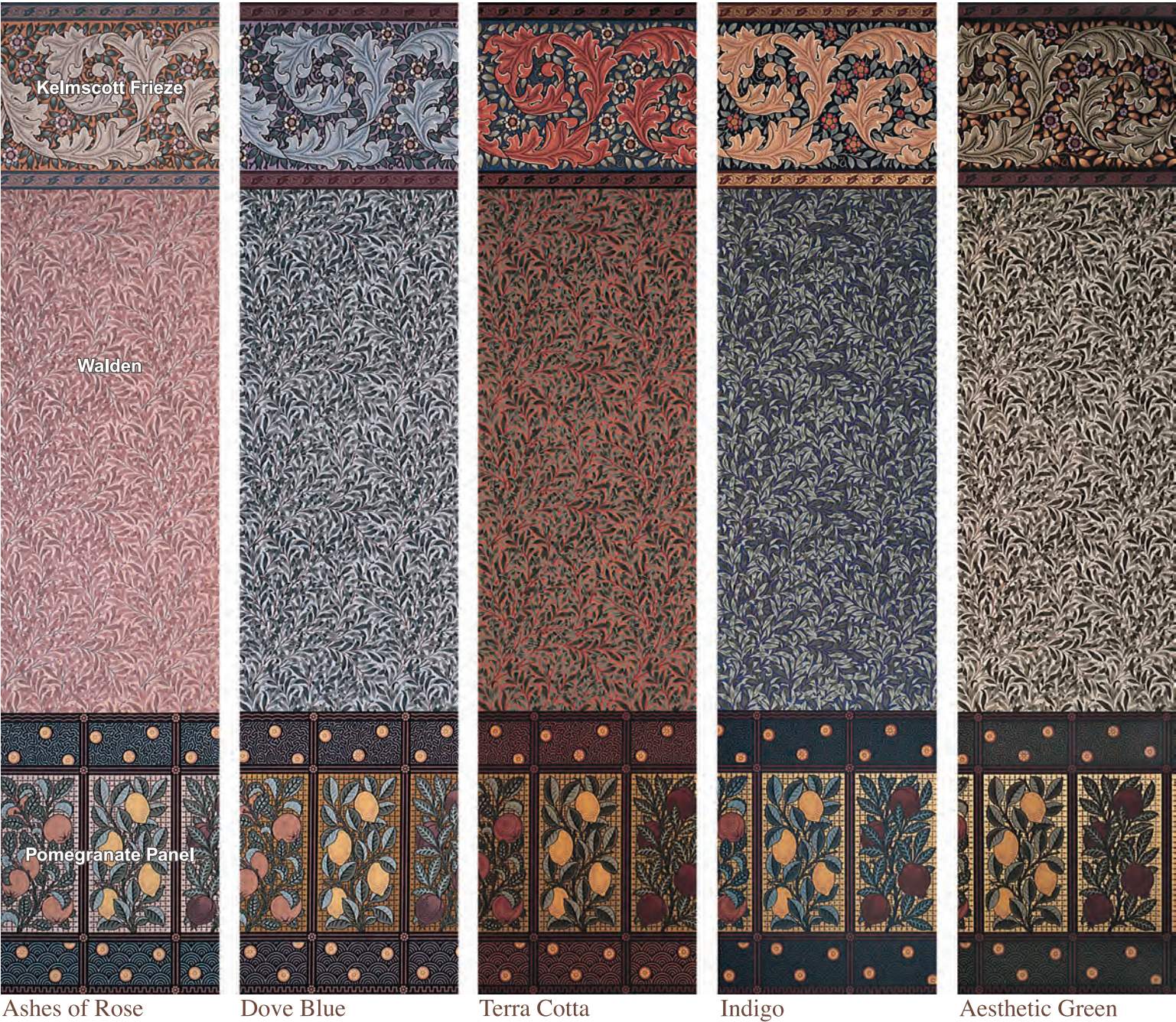
Morris Tradition

Roomset

William Morris (1834-1896), an English designer, craftsman, poet, and social visionary, profoundly influenced the decorative arts in the 19th century. Allied with the Pre-Raphaelite school of painting and inspired by an idealized vision of the artists/craftsmen of the Middle Ages, his firm, Morris & Co., became famous for creating handcrafted interiors of the highest quality. The firm's original designs for furniture (the famous "Morris Chair"), textiles, and stained glass redefined the standards of Victorian taste, and served as an inspiration for the Arts and Crafts Movement.

Morris is probably best known for his wallpaper and fabric designs, where his love of nature found full expression. This same inspiration is seen in our own collection of wallpapers and coordinating elements in the distinctive Morris style.

Morris Tradition Wall Elements



Pattern	Code	Ashes of Rose	Dove Blue	Terra Cotta	Indigo	Aesthetic Green	Sample Cost
Kelmscott Frieze	KSF	250	610	210	650	410	3.00
Pomegranate Panel	PGP	110	610	210	650	410	3.00
Walden	WAW	110	610	210	650	410	1.00
SAMPLE KIT*	MTK	110	610	210	650	410	12.00

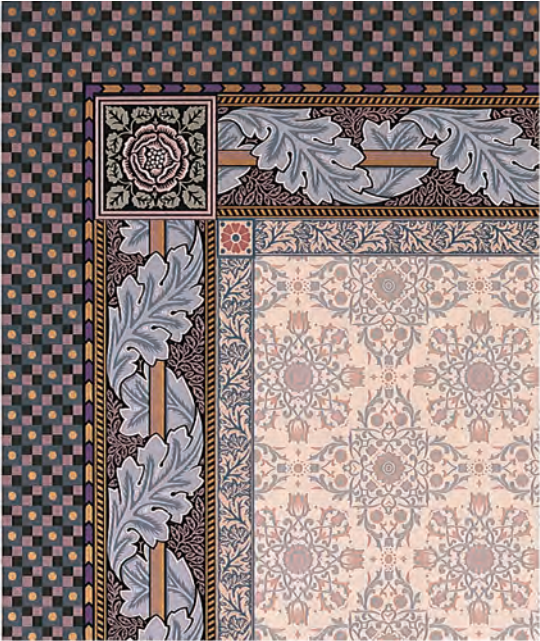
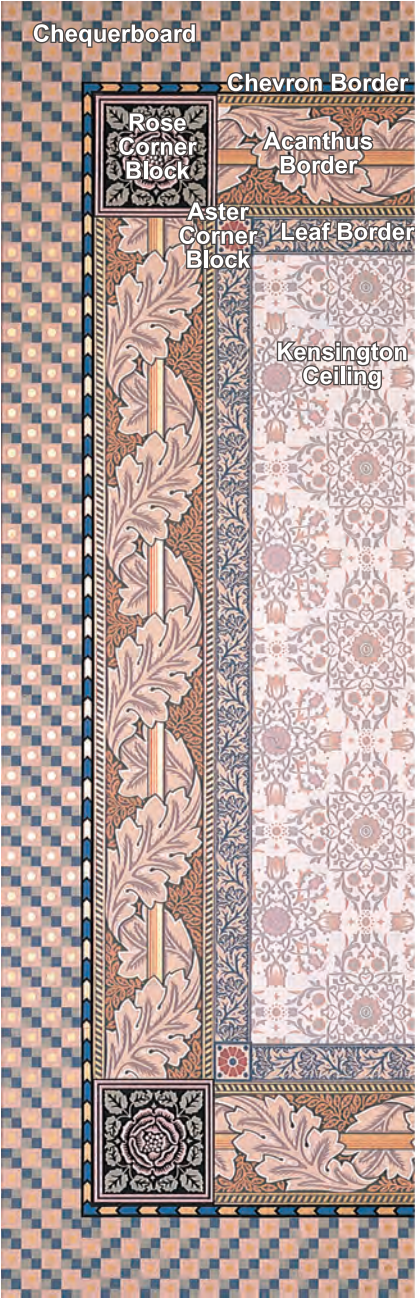
* Sample Kits are sold individually by color series, and contain both wall and ceiling elements.

Morris Tradition

Ceiling Elements

Dove Blue

Indigo



Ashes of Rose

Terra Cotta

Aesthetic Green

Pattern	Code	Ashes of Rose	Dove Blue	Terra Cotta	Indigo	Aesthetic Green	Sample Cost
Acanthus Border	ACB	320	610	210	350	410	1.00
Aster Corner Block	AST	250	250	150	150	150	1.00
Chequerboard	CQW	310	640	210	210	410	1.00
Chevron Border	CVB	140	640	640	140	640	1.00
Kensington Ceiling	KNC	320	330	250	410	310	1.00
Leaf Border	LEB	640	640	210	750	750	1.00
Rose Corner Block	RST	110	110	650	650	410	1.00

Morris Tradition

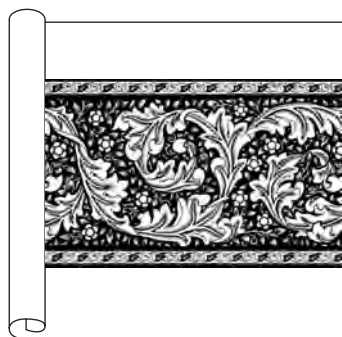
Alternative Wall Fill Papers



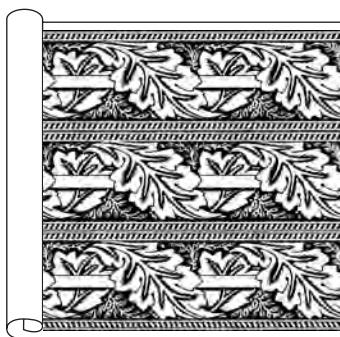
Pattern	Code	Pewter	Aesthetic Green	Jasper Green	Euca-lyptus	Dove Blue	Ashes of Rose	Terra Cotta	Apricot	Sample Cost
Bird & Anemone	BAW	710	420	520	560	620	120	220	260	1.00
Claire's Willow	CWW	710	420	520	560	620	120	220	260	1.00
Clementina	CLW	-	410	-	550	-	110	-	650	1.00
Marigold	MAW	710	420	520	560	620	120	220	260	1.00
Raspberry Bramble	RBW	-	410	-	550	-	-	210	250	1.00
Willow	WLW	710	420	520	560	620	120	220	260	1.00

Morris Tradition Product Information

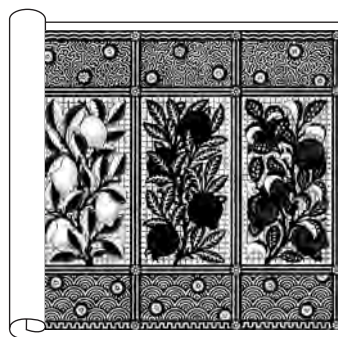
The icons below illustrate how each pattern is handprinted on an untrimmed 30" wide roll of paper. Please note that borders are printed in multiple strips.



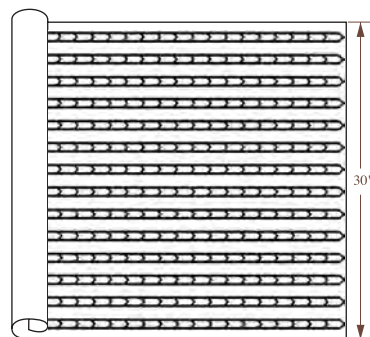
Kelmscott Frieze (KSF) Price Code: T
18" high; can be trimmed to 14-1/2" high
without two borders
Repeat size 27"



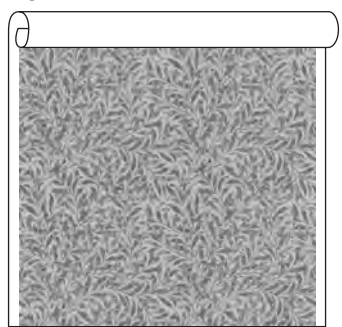
Acanthus Border (ACB) Price Code: S
Three 9" borders per width
Repeat size 13-1/2"



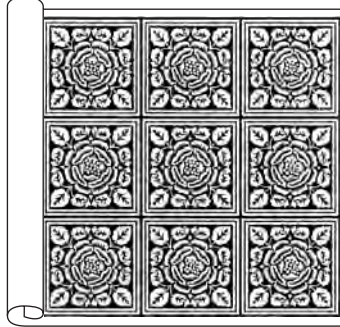
Pomegranate Panels (PGP) Price Code: S
27" high; trims to either 17" or 22" high.
Repeat size 27"



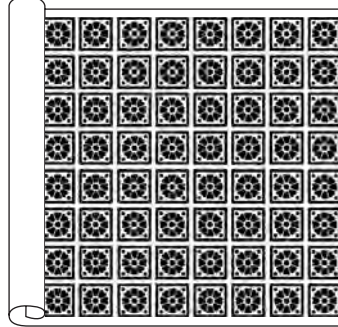
Chevron Border (CVB) Price Code: Q
Fourteen 1" borders per width
Repeat size 3"



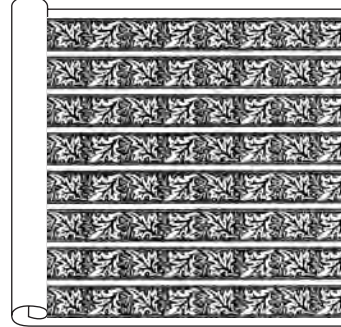
Walden (WAW) Price Code: E
Sold by the roll: 30 sq. ft.
Repeat size 13-1/2"



Rose Corner Block (RST) Price Code: Q
Each block 9" X 9"; 12 blocks per yard



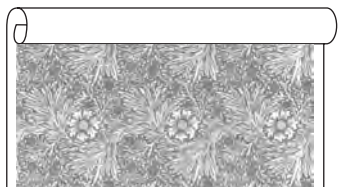
Aster Corner Block (AST) Price Code: P
Each block 3" X 3"; 88 blocks per yard



Leaf Border (LEB) Price Code: P
Eight 3" borders per width
Repeat size 6-3/4"



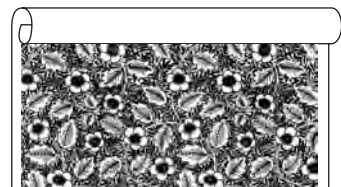
Kensington Ceiling (KNC) Price Code: C
Sold by the roll: 30 sq. ft.
Repeat size 13-1/2"



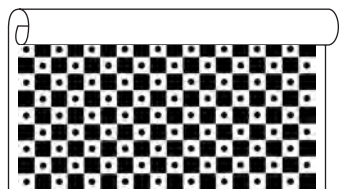
Marigold (MAW) Price Code: A
Sold by the roll: 30 sq. ft.
Repeat size 9"



Bird & Anemone (BAW) Price Code: A
Sold by the roll: 30 sq. ft.
Repeat size 22"



Clementina (CLW) Price Code: C
Sold by the roll: 30 sq. ft.
Repeat size 13-1/2"



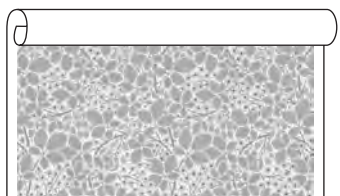
Chequerboard (CQW) Price Code: D
Sold by the roll: 30 sq. ft.
Repeat size 3"



Willow (WLW) Price Code: A
Sold by the roll: 30 sq. ft.
Repeat size 27"



Claire's Willow (CWW) Price Code: A
Sold by the roll: 30 sq. ft.
Repeat size 13-1/2"



Raspberry Bramble (RBW)
Price Code: G. Sold by the roll: 30 sq. ft.
Repeat size 17"



Raspberry Bramble in the Aesthetic Green colorway (RBW-410).

Questions? Give us a call at (707) 746-1900 (Mon.-Fri., 9-5 PST) or e-mail us anytime at info@bradbury.com

If You Have A Lower Ceiling...

Not all ceiling heights can accommodate the classic tripartite arrangement (frieze, wall fill, dado) we show in our catalog pages. For lower wall elevations we recommend using a border instead of a frieze at the top of the wall.

You may also add a border above the baseboard (as pictured at right) or use a full dado paper (as in the diagram, far right). Many of our wide frieze papers may be successfully used as dado papers in these settings.

Lower ceilings were often covered with a single ceiling paper, omitting ceiling borders and corner blocks. If you wish to do an elaborate treatment on a low ceiling, we recommend keeping the enrichment area narrow —12" or less.



WALL
FILL

DADO

How To Measure

Before you begin, please check the icons on the Product Information pages to see if the pattern is sold by the roll or by the yard. A roll of wallpaper (27" wide and 15' long) covers 30 sq. ft.

For **Rolls**: (all measurements are in feet):

Wallpaper: Number of rolls = $(\text{Perimeter of room} \times \text{Height}) \div 30$.

Do not subtract for doors or windows unless they are over 54" wide. This compensates for the pattern repeat.

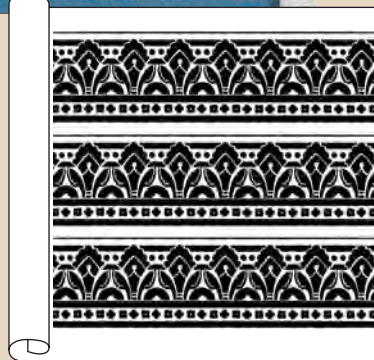
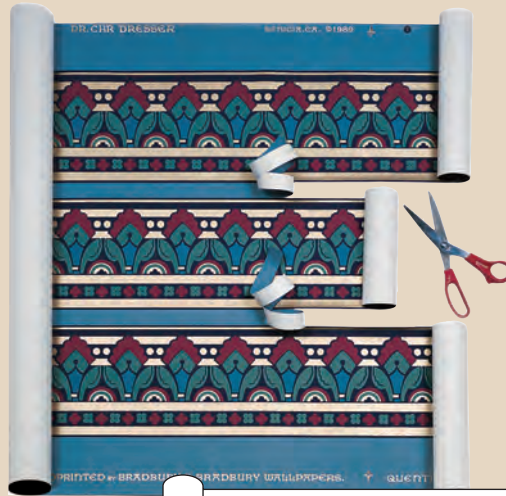
Ceiling Paper: Number of rolls = $(\text{Length of ceiling} \times \text{Width of ceiling}) \div 30$.

Note: Rolls are generally shipped in 5- or 6-roll bolts.

For **Yards**:

Borders: To avoid waste, please note that borders come in untrimmed multiple strips on a 30" wide roll of paper. Divide the total yards of border required by the number of border strips on the roll.

Panels and Corner Blocks: Refer to the icons on the Product Information pages to determine how many panels or blocks per linear yard.



Need Help Designing Your Room?

For a reasonable fee, our skilled in-house designers will create a design to your individual specifications. The service includes a detailed scale drawing which can be used as an installation guide, as well as quantity and cost estimates. Request a Design Service packet for more information.

Questions? Please call or e-mail us. We've had years of experience, and are happy to help.

BORDER

9'

(707) 746-1900

Fax (707) 745-9417

Mon-Fri 9:00 a.m. - 5:00 p.m. Pacific Time

P.O. Box 155, Benicia, CA 94510

info@bradbury.com

www.bradbury.com

How To Order

Orders are accepted by phone, fax and mail. To order via fax or mail, you may use our Sample Order & Printing Reservation form. Extra forms may be downloaded from the Services section of our website.

Samples: We recommend that you first obtain samples for color matching, as photographs cannot accurately recreate the effects of metallic inks and flat oil pigments. Our fully stocked Sample Department will quickly provide you with individual samples. Express delivery is available upon request. Sample costs are listed on the Wall and


Ceiling Elements pages of each Roomset.

Printing Reservations: Our Victorian collection is printed by hand in our Benicia studio. Although we keep some patterns in stock, most of our designs are printed to order and lead times may vary. Printing reservations are scheduled upon receipt of full payment.

Any Questions? We are a small firm and take great pride in giving individualized attention to our clients. If you have a question, please give us a call or send an e-mail.



WE GUARANTEE our craftsmanship. Any defective printing may be returned for replacement or a full cash refund.



Shown here: Centennial wall fill, an original Christopher Dresser pattern from 1876, the American Centennial. Five hand-printed metallic colors create a unique iridescent glow. See more of Centennial and all of the upcoming additions to our collections at our website: www.bradbury.com.

Bradbury & Bradbury Art Wallpapers
P.O. Box 155, Benicia, CA 94510 • (707) 746-1900