

# Neo-Classical

## Wallpaper Roomset

Bradbury & Bradbury  
ART WALLPAPERS



# Ornament as Crime...

In the 19th century, if you wished to ornament a room in the Classical manner, an eager army of highly skilled artisans would be at your command. That was in the years before the famous Viennese polemic "Ornament as Crime" heralded the upcoming White Age of 20th century Modernism.

Although the late 20th century has seen a revival of the decorative arts, it is still difficult, if not impossible, for the average historic home owner to find an affordable yet knowledgeable source for hand painted Classical decoration.

Our goal in creating this collection was to engineer a set of wall and ceiling ornaments that do not derive from historic wallpaper, but rather seek to capture the essence of the great Classically-inspired painted interiors of 19th century America.

Originally planned and scaled for Italianate and Second Empire homes, the individual patterns in this roomset can be combined in a variety of ways to reflect the many strands of 19th century Classicism.







# Historical Profile

The first quarter of the 19th century in America saw a continuation of the chaste and delicate designs of classical antiquity popular in the late 18th century. Influenced by the Neoclassicism of Regency England and Napoleonic France, early classical America is best seen in our Federal, Greek Revival, and American Empire styles.

After the Civil War, the more opulent Renaissance Revival style gained prominence. This style borrowed freely from its historical namesake, and was often seen inside fashionable Italianate and Second Empire houses. Classical forms were infused with substantial and impressive qualities well suited to a new and successful class made prosperous by the Industrial Revolution. Renaissance Revival interiors often included elaborately carved furnishings and extravagantly draped windows beneath ornamental ceilings that varied from simple stencilled borders to lavish trompe l'oeil paintings.

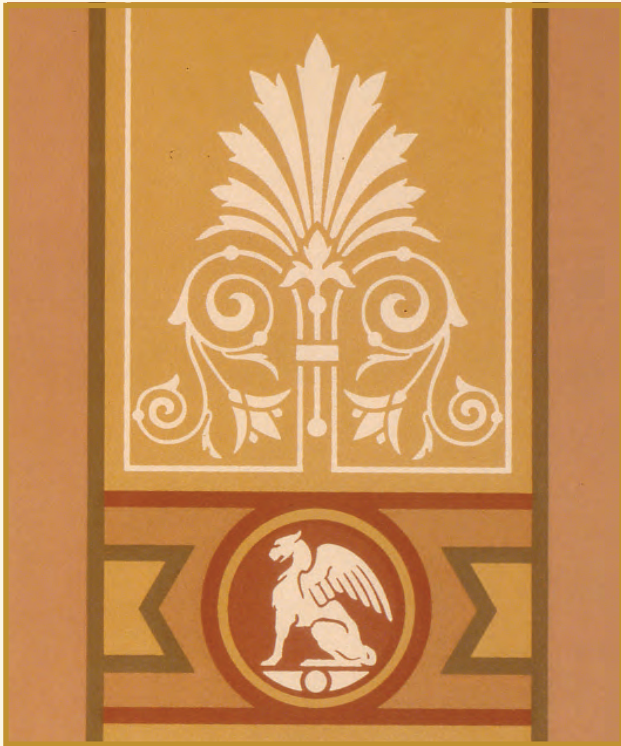
A new awareness of America's own colonial building traditions occurred after the Centennial celebration of 1876. Design inspiration for the Colonial Revival style was taken from the classical refinement and period furnishings seen in original colonial homes. Even American Queen Anne and Shingle style buildings often included Colonial Revival details. Thus, by the turn of the century, classical taste in America had come full circle.

*A room without an ornamental ceiling is like a world without a sky.*  
- Larry Boyce



# Cream Color Series

A



A) Detail of Renaissance Dado.

B) Cameo and Rose Panels inset into the frieze above the Renaissance Damask and Dado.

C) The music room of the Sylvester Mansion, San Francisco.



B

C







Umbrian Stripe Border USB-250



Fringe Border FRB-310



Olympia Border OLB-250



Italianate Border ITB-310



Renaissance Frieze REF-250



Findlay Ceiling FYC-310



Juno Enrichment JNE-250



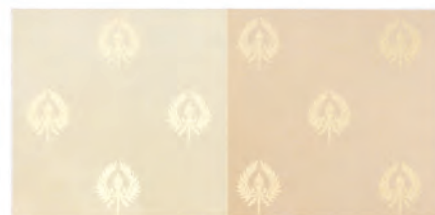
Roman Corner Fan RCT-310



Antique Rose Panel ARP-310



RDW-310 Renaissance Damask RDW-250



HDW-310 Hadrian's Wall HDW-250



ESW-310 Empire Star ESW-250



NSW-310 Napoleon Star NSW-250



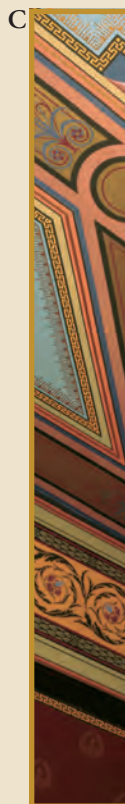
Renaissance Dado RED-250



Cameo Panels CAP-310



# Pompeiiian Color Series



- A) A dining room with a tripartite wall treatment: dado, wall fill, and frieze.
- B) Renaissance Damask in terra cotta.
- C) Detail of dining room ceiling at left.
- D) Renaissance Frieze and Umbrian Stripe Border combined in a typical 18" frieze area.
- E) A bath with Empire Star wall fill in terra cotta.







Umbrian Stripe Border USB-410



Fringe Border FRB-550



Olympia Border OLB-410



Italianate Border ITB-410



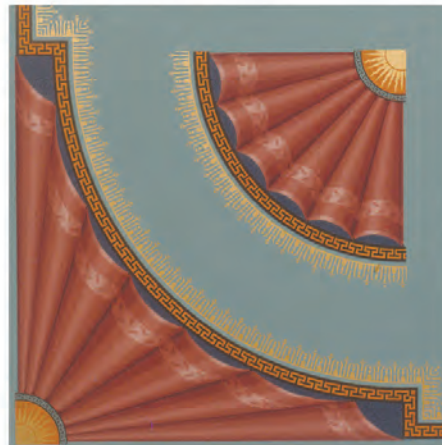
Renaissance Frieze REF-410



Findlay Ceiling FYC-550



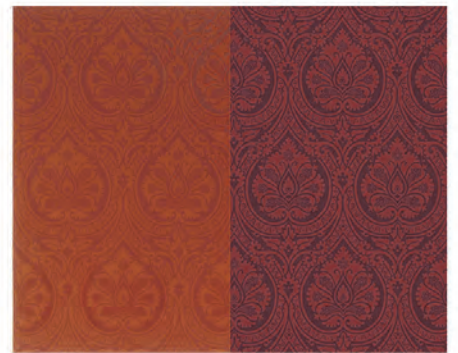
Juno Enrichment JNE-130



Roman Corner Fan RCT-550



Antique Rose Panel



RDW-210 Renaissance Damask RDW-130



HDW-210 Hadrian's Wall HDW-130



ESW-210 Empire Star ESW-130



NSW-210 Napoleon Star NSW-130



Renaissance Dado RED-550



Cameo Panels CAP-410



# Jasper Color Series



A

B



A) Wall treatment in the Empire style.

B) Detail of Empire panel showing Renaissance Damask, Napoleon Star, and Olympia Border with its corner block.

C) Renaissance Revival woodwork pinstriped using colors from the wall and ceiling papers. Juno Enrichment is used in two ways: as a drip molding and rolled into the cove of a plaster cornice.

D) Renaissance Damask wall fill.

E) Renaissance Revival parlors in the Brune-Reutlinger House, San Francisco.

C

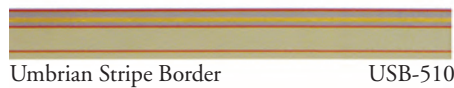


D

E







Umbrian Stripe Border USB-510



Fringe Border FRB-110



Olympia Border OLB-510



Italianate Border ITB-610



Renaissance Frieze REF-110



Findlay Ceiling FYC-110



Juno Enrichment JNE-450



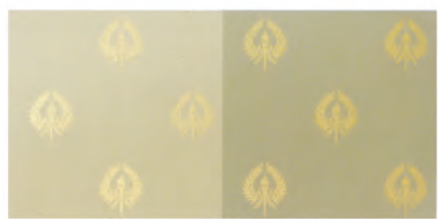
Roman Corner Fan RCT-110



Antique Rose Panel



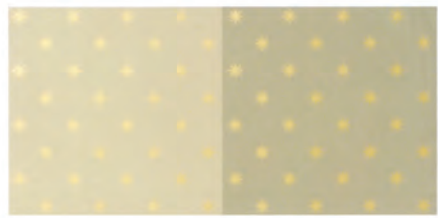
RDW-510 Renaissance Damask RDW-520



HDW-450 Hadrian's Wall HDW-510



ESW-450 Empire Star ESW-510



NSW-450 Napoleon Star NSW-510



Renaissance Dado RED-510

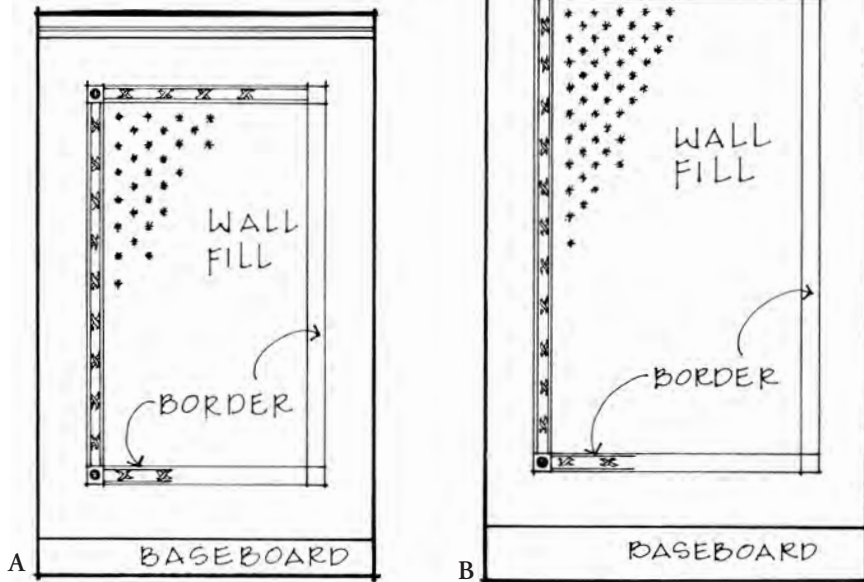


Cameo Panels CAP-110

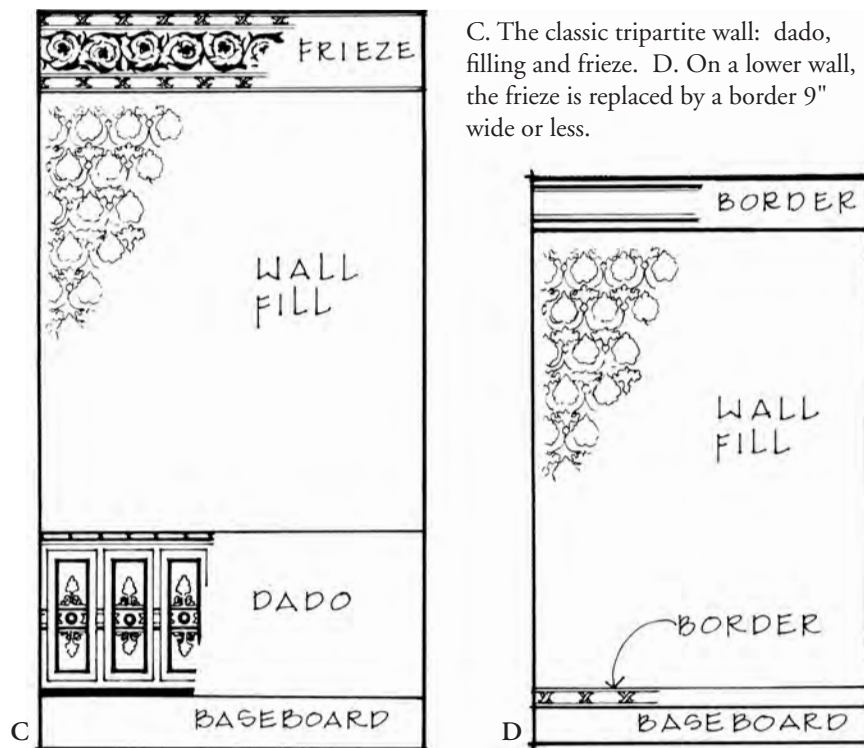


# Ornamental Walls and Ceilings

- A. On a wall 9' or lower, a narrow border is used to create a simple panel.  
B. A higher wall allows room for a wide border or frieze above the panels.



## Wall elements are combined in proportion to wall heights.



- C. The classic tripartite wall: dado, filling and frieze. D. On a lower wall, the frieze is replaced by a border 9" wide or less.

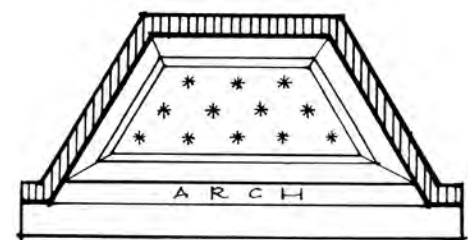
**Roomset:** *a modular group of wallpapers constructed with standardized units for flexibility and variety in use.*

Modularity allows great flexibility in designing ornamental rooms. Individual elements may be selected from the roomset and combined with paint to create rooms of elegant simplicity. Opulent ornamental effects can be achieved by using all the elements in combination, or by augmenting them with patterns from other roomsets in our collection.

The photo at right illustrates how modular borders can be grouped together to give the appearance of a seamless band of pinstriped and stencilled ornament. Using the 9" Italianate Border as the basic module, narrower borders can be added to create bands of varying widths.

For wall panels, a narrow border such as Umbrian Stripe or Olympia would serve as the basic module.

## Bay Windows

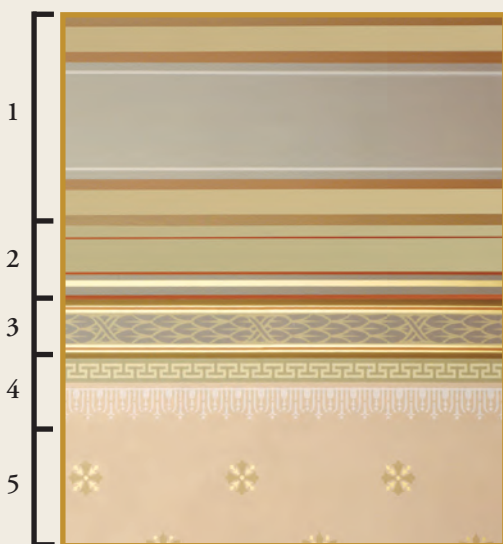


Bays, turrets, and alcoves can be simply framed with a narrow border placed at the perimeter. In Italianate houses, the decoration of a bay window was often a simplified version of the decorative scheme used in the main part of the room.



## Our In-House Design Service

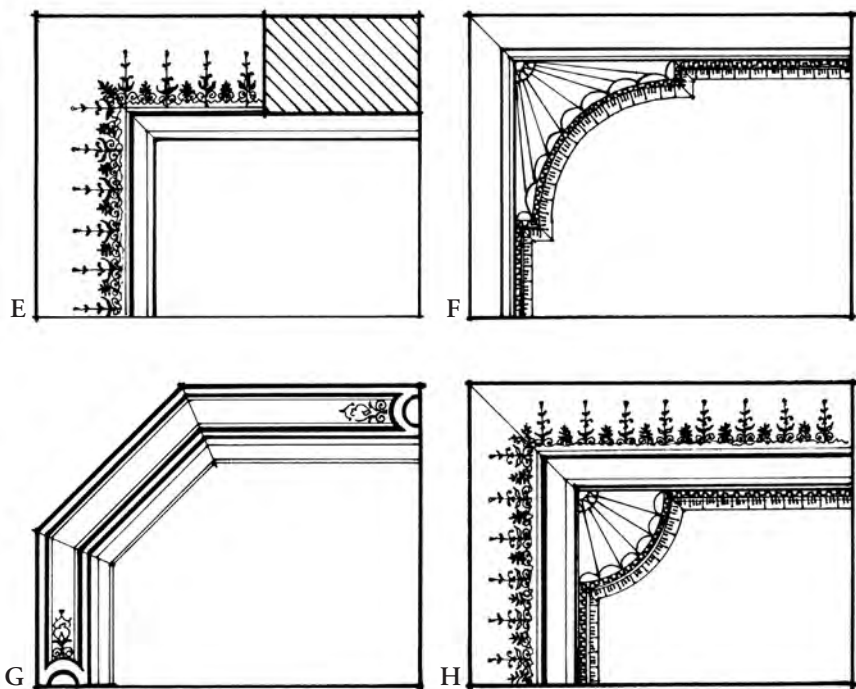
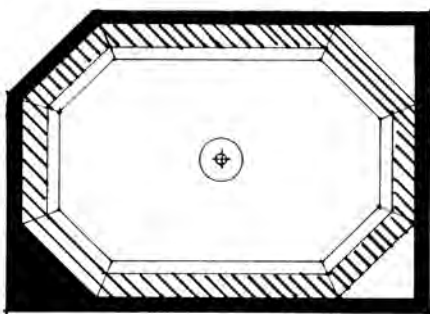
Given the wide range of choices, many clients ask for help in designing ornamental ceilings. For a reasonable fee, our skilled in-house designers will create a design to your individual specifications. The service includes a detailed scale drawing which can be used as an installation guide, as well as accurate quantity and cost estimates. Request our free Design Service Kit.



- 1) Italianate Border
- 2) Umbrian Stripe Border
- 3) Olympia Border
- 4) Fringe Border
- 5) Findlay Ceiling fill

## Irregular Rooms

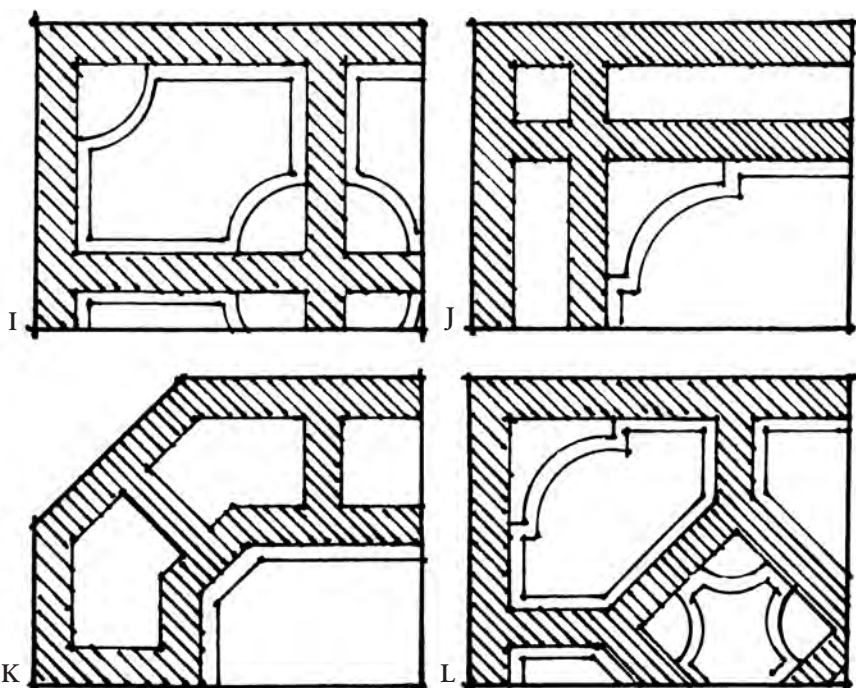
Irregularly shaped rooms present some exciting challenges. Start by trying to create a symmetrical central ceiling panel: many five and six-sided rooms will resolve into elegant octagonal shapes, as illustrated below.



*For lower ceilings:* E) **Juno Enrichment** forms a stencil-like perimeter border using the chimney breast (shaded) as a starting point. F) A striped perimeter border frames the **Roman Corner Fan** and **Fringe Border**. G) Any combination of borders may be mitered around the perimeter of an irregular ceiling. H) A more complex design uses concepts from the previous three diagrams.

## Ceilings vary from simple to complex, depending on height.

*For higher ceilings:* (I,J,K,L,) The nine-inch **Italianate Border** (shaded) is used to form a framework of ceiling panels. The panels may then be embellished with smaller borders and fans according to the proportions of the ceiling. Each diagram below represents a ceiling quadrant.





# Product Information

Our wallpapers come untrimmed and are not prepasted. Wall and ceiling fills are sold by the roll (a roll measures 27" x 15' and covers 30 sq. ft.).

Borders, friezes, dadoes and panels are sold by the yard. Borders come in multiple strips on a 30" wide roll. The diagrams below show how the individual Neo-Classical elements are arranged on the paper. Please refer to these diagrams when ordering.



**Cameo Panels (CAP)** Price Code: S Sold by the yard. One male and one female cameo per width. Each measures 16" x 16". Trims to 12" x 12" without frame.



**Renaissance Damask (RDW)** Price Code: A Sold by the roll: 30 sq. ft. Repeat size: 13½"



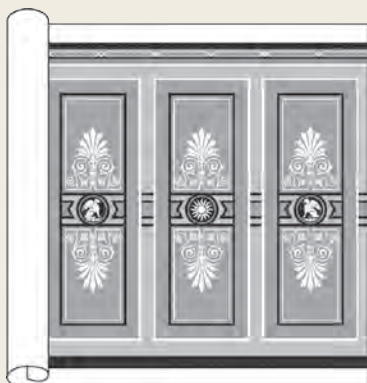
**Hadrian's Wall (HDW)** Price Code: A Sold by the roll: 30 sq. ft. Repeat size: 9"



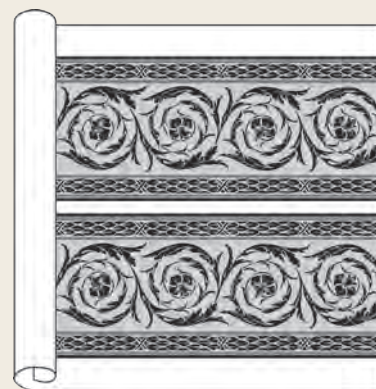
**Empire Star (ESW)** Price Code: A Sold by the roll: 30 sq. ft. Repeat size: 4½"



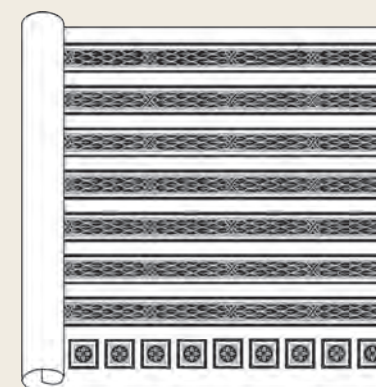
**Napoleon Star (NSW)** Price Code: A Sold by the roll: 30 sq. ft. Repeat size: 3⅜"



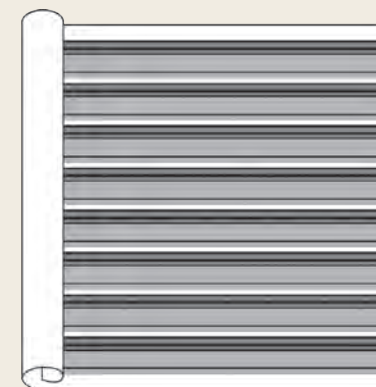
**Renaissance Dado (RED)** Price Code: S Sold by the yard. 27" high. Repeat size 27"



**Renaissance Frieze (REF)** Price Code: T Sold by the yard. Two 12" borders per width. Repeat size 27"



**Olympia Border (OLB)** Price Code: R Sold by the yard. Seven 2½" borders per width plus one row of 2½" x 2½" corner blocks. Repeat size of border: 13½"

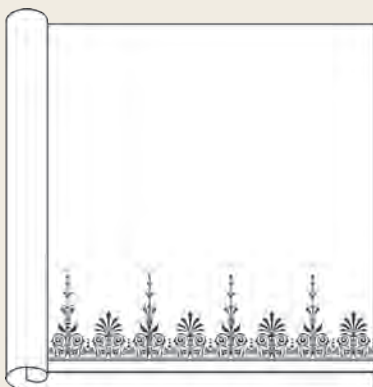


**Umbrian Stripe Border (USB)** Price Code: Q Sold by the yard. Eight 3" borders per width.

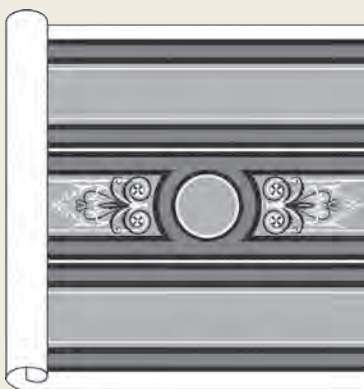




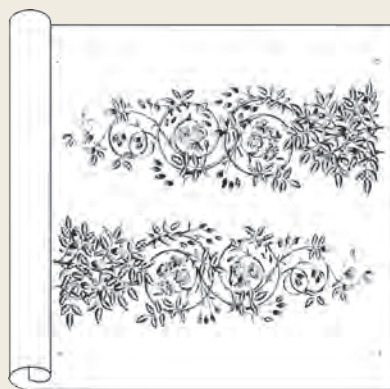
**Fringe Border (FRB)** Price Code: **Q** Sold by the yard. Eight 3" borders per width. Repeat size 1"



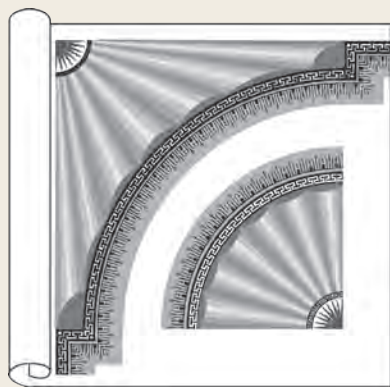
**Juno Enrichment (JNE)** Price Code: **P** Sold by the yard. One 8¾" border per width floating on a plain background. Specifically engineered to fit in perimeters defined by chimney breasts. Repeat size: 6¾"



**Italianate Border (ITB)** Price Code: **S** Sold by the yard: Two continuous 9" borders per width. Center 9" border contains a decoupage circle and filigree 26" long.



**Antique Rose Panels (ARP)** Price Code: **T** Sold by the yard. Two panels per width. Each panel is 13" wide. The length can be trimmed from 32" to 54" long.



**Roman Corner Fan (RCT)** Price Code: **T** Sold by the yard. One large and one small per width. Large fan measures 27" x 27". Small fan has a radius of 15"



**Findlay Ceiling (FYC)** Price Code: **B** Sold by the roll: 30 sq. ft. Repeat size: 6¾"

## Customer Service

Orders are accepted by phone, fax and mail. To order via fax or mail, you may use our Sample Order & Printing Reservation form. Extra forms may be downloaded from the Services section of our website.

**Samples:** Our fully stocked sample department can quickly provide you with samples of the designs in our collection. Phone orders are accepted with credit card payment, and samples are usually shipped the same day. Samples can also be ordered online at [www.bradbury.com](http://www.bradbury.com).

**Printing Reservations:** Our wallpapers are printed by hand in our Benicia studio. Although we keep some patterns in stock, most of our designs are printed to order and lead times may vary. Printing reservations are scheduled upon receipt of full payment.

**Design Service:** Given the wide range of choices, many clients ask for help in designing ornamental ceilings. For a reasonable fee, our skilled in-house designers will create a design to your individual specifications. The service includes a detailed scale drawing which can be used as an installation guide, as well as accurate quantity and cost estimates. Call for a free Design Service Kit or download it directly from the Services section at [bradbury.com](http://bradbury.com).

**Our Craftsmanship is Guaranteed:** Any defective printing may be returned for replacement or a full cash refund.

**Any Questions?** We are a small firm and take great pride in giving individualized attention to our clients. If you have a question, please give us a call or e-mail us at [info@bradbury.com](mailto:info@bradbury.com).

**Our Customer Service is open from 9:00 a.m.-5:00 p.m. (Pacific Time), Monday-Friday.**

**707.746.1900**

Fax 707.745.9417

P.O. Box 155,

Benicia, CA 94510

[www.bradbury.com](http://www.bradbury.com)





Bradbury & Bradbury Art Wallpapers

P.O. Box 155, Benicia, CA 94510

(707) 746-1900

Fax (707) 745-9417

[www.bradbury.com](http://www.bradbury.com)